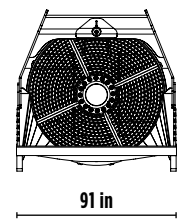
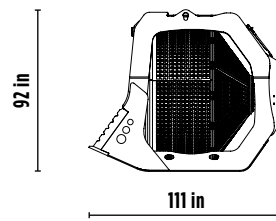
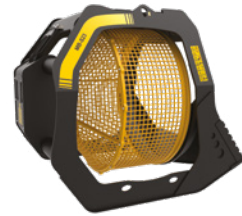



MB-S23



ACCESSORIES

- RECOMMENDED SPARE PARTS KIT
- FIXED COUPLING
- HOUR METER
- 24 MONTHS WARRANTY

SPECIFICATIONS

EQUIPMENT	 $\geq 77,200$ < $110,200$ lb
LOAD CAPACITY	6 .62 cy
GRID DIAMETER	79 in
DIMENSIONS	111" x 91" x 92" H in
OIL FLOW	42 gal/min
PRESSURE COUNTER PRESSURE	> 4,641 PSI < 73 PSI
WEIGHT	8,267 lbs



AREAS OF APPLICATION


RECYCLING


UTILITY WORK


LARGE-SCALE URBAN SITES


QUARRIES


MINES

The data provided above is not binding, as the manufacturer reserves itself the right to make improvements to its products at any time and with no advance notice. References to excavator weights are approximate and many may be subject to changes.