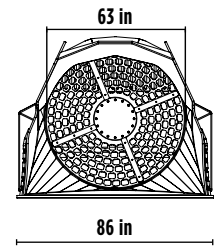
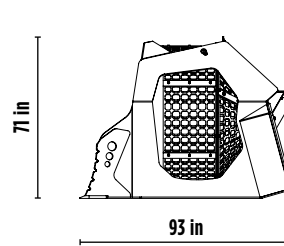
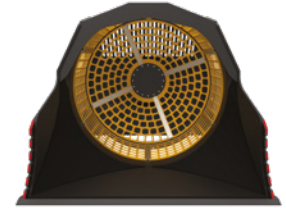
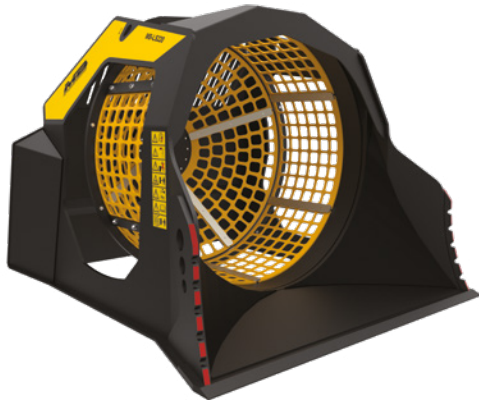


MB-LS220 S2




ACCESSORIES



- RECOMMENDED SPARE PARTS KIT
- HOUR METER
- 24 MONTHS WARRANTY



SPECIFICATIONS

EQUIPMENT	 ≥ 26,500 ≤ 55,100 lb
LOAD CAPACITY	3.14 cy
GRID DIAMETER	63 in
DIMENSIONS	93" x 86" x 71" H in
OIL FLOW	32 gal/min
PRESSURE COUNTER PRESSURE	> 2,900 PSI < 580 PSI
WEIGHT	6,173 lbs

AREAS OF APPLICATION

							
RECYCLING	MEDIUM-SCALE RESIDENTIAL SITES	SMALL-SCALE COMMERCIAL SITES	DEMOLITION	FOUNDRIES	INDUSTRY	QUARRIES	MINES

The data provided above is not binding, as the manufacturer reserves itself the right to make improvements to its products at any time and with no advance notice. References to excavator weights are approximate and many may be subject to changes.