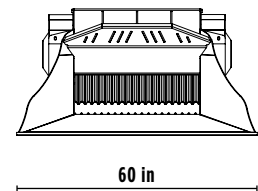
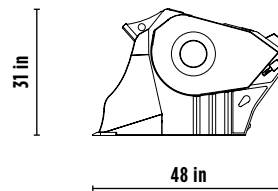
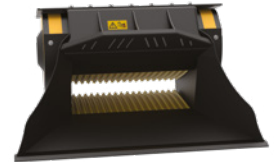
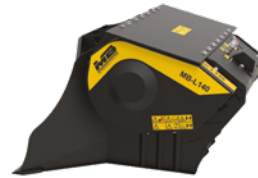
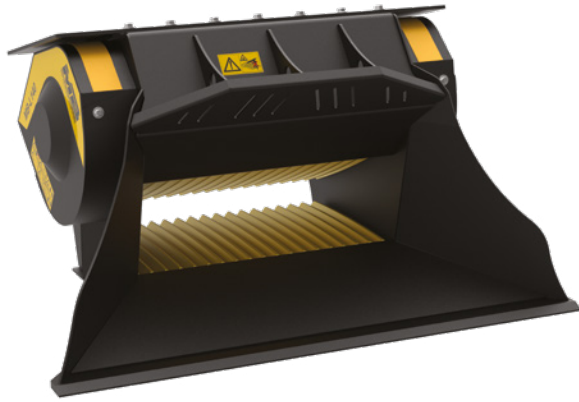


MB-L140 S2




ACCESSORIES

- RECOMMENDED SPARE PARTS KIT
- FIXED COUPLING
- HOUR METER
- DUST SUPPRESSION KIT
- 24 MONTHS WARRANTY



SPECIFICATIONS

EQUIPMENT	 $\geq 6,600 \leq 28,700$ lb
LOAD CAPACITY	0.26 cy
OPENING DIMENSIONS	W 29 H 10 in
OUTPUT SETTING	$\geq 0.5 \leq 2.5$ in
DIMENSIONS	48" x 60" x 31" H in
OIL FLOW	26 gal/min
PRESSURE	> 2,900 PSI
COUNTER PRESSURE	< 146 PSI
WEIGHT	2,161 lbs

AREAS OF APPLICATION



RECYCLING



MEDIUM-SCALE
RESIDENTIAL
WORKSITES



SMALL-SCALE
COMMERCIAL
WORKSITES



SMALL
DEMOLITION SITES

The data provided above is not binding, as the manufacturer reserves itself the right to make improvements to its products at any time and with no advance notice.
References to excavator weights are approximate and many may be subject to changes.



WWW.MBCRUSHER.COM