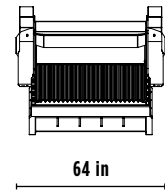
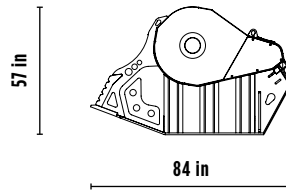
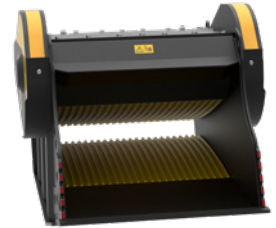
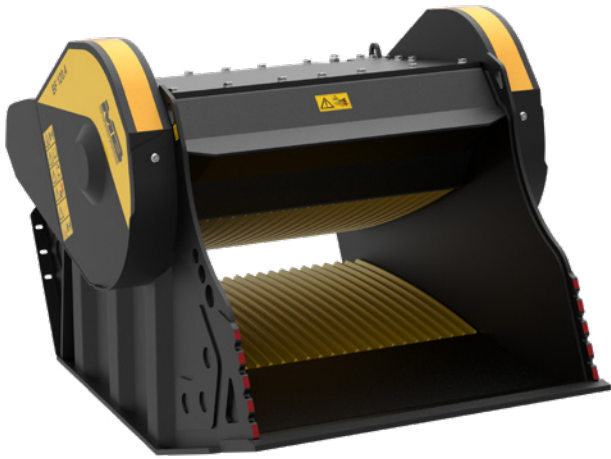


# BF 120.4 S4




## ACCESSORIES

- RECOMMENDED SPARE PARTS KIT
- FIXED COUPLING
- IRON SEPARATOR
- HOUR METER
- DUST SUPPRESSION KIT
- 24 MONTHS WARRANTY



## SPECIFICATIONS

EQUIPMENT	 $\geq 66,100 \leq 99,200$ lb
LOAD CAPACITY	1.70 cy
OPENING DIMENSIONS	W 47 H 21 in
OUTPUT SETTING	$\geq 0.5 \leq 5.5$ in
DIMENSIONS	84" x 64" x 57" H in
OIL FLOW	$> 50 < 69$ gal/min
PRESSURE	$> 3,191$ PSI
WEIGHT	10,582 lbs

## AREAS OF APPLICATION

  
**RECYCLING**

  
**LARGE-SCALE  
URBAN SITES**

  
**ROAD WORKS**

  
**DEMOLITION**

  
**EXCAVATION**

  
**QUARRIES  
AND MINES**

  
**FOUNDRY**

  
**UTILITY  
WORK**

The data provided above is not binding, as the manufacturer reserves itself the right to make improvements to its products at any time and with no advance notice. References to excavator weights are approximate and many may be subject to changes.