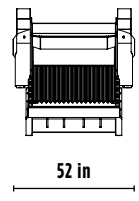
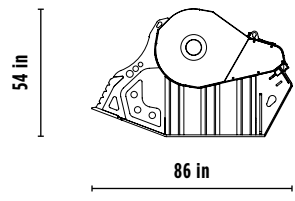
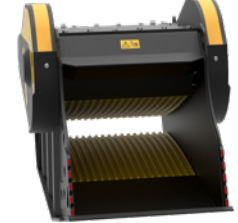
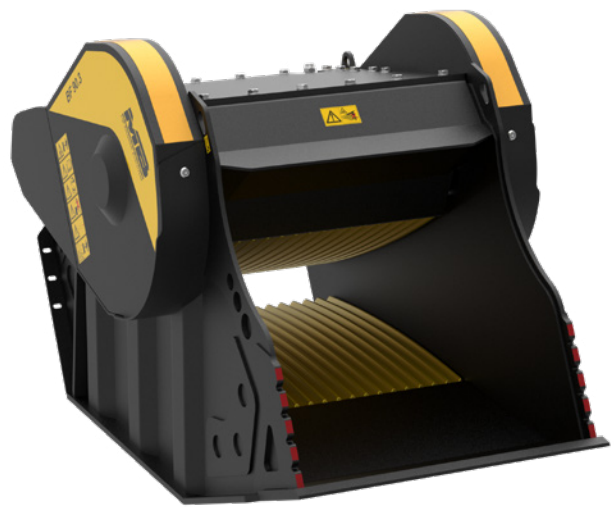


# BF 90.3 S4



## ACCESSORIES

- RECOMMENDED SPARE PARTS KIT
- FIXED COUPLING
- IRON SEPARATOR
- HOUR METER
- DUST SUPPRESSION KIT
- 24 MONTHS WARRANTY



## SPECIFICATIONS

EQUIPMENT	≥ 46,300 ≤ 70,500 lb
LOAD CAPACITY	1.17 cy
OPENING DIMENSIONS	W 36 H 21 in
OUTPUT SETTING	≥ 0.5 ≤ 5.5 in
DIMENSIONS	86" x 52" x 54" H in
OIL FLOW	> 48 < 63 gal/min
PRESSURE	> 3,191 PSI
WEIGHT	7,716 lbs

## AREAS OF APPLICATION

RECYCLING

URBAN  
JOB SITES

ROAD WORKS

DEMOLITION

EXCAVATION

QUARRIES  
AND MINES

FOUNDRY

TUNNELS  
AND ENCLOSED  
SPACES

The data provided above is not binding, as the manufacturer reserves itself the right to make improvements to its products at any time and with no advance notice. References to excavator weights are approximate and many may be subject to changes.