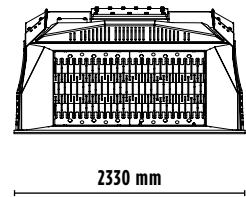
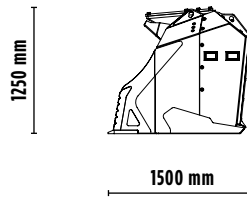
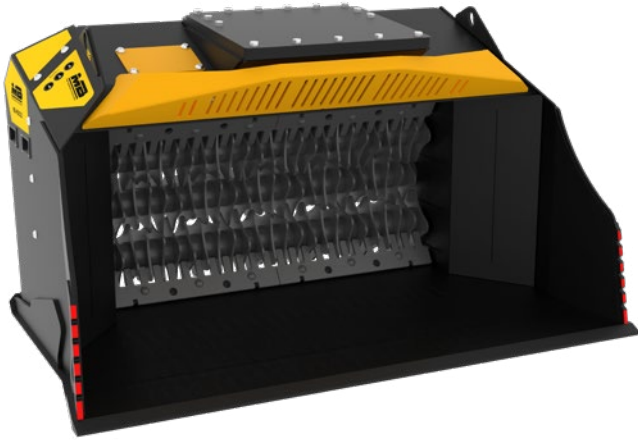




MB-HDS323



ACCESSORIES





- SPARE PARTS KIT
- FIXED COUPLING
- SHAFT HOLDER
- RC COMPOST KIT
- RM MIXER KIT
- RE8 FINE SIFTING KIT
- RE16 FINE SIFTING KIT
- RQ20 MEDIUM SIFTING KIT
- RQ50 MEDIUM SIFTING KIT

SPECIFICATIONS

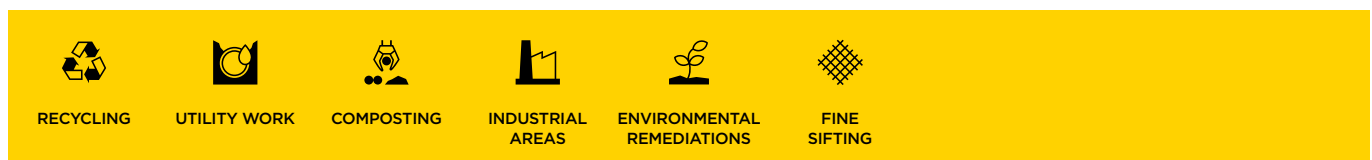
EQUIPMENT	 $\geq 20 \leq 35$ Ton  $\geq 10 \leq 15$ Ton
LOAD CAPACITY	1,65 m ³
DIMENSIONS	2330 x 1500 x H 1250 mm
PRESSURE	> 250 bar
WEIGHT	2,40 Ton
OIL FLOW	120 l/min.

SHAFT KITS

* shaft in closed position

KIT	SETTINGS	APPLICATION
 RC COMPOST KIT	36,5* mm	Crushing brushwood and wood trusses Composting
 RM MIXER KIT	-	Soil Aeration Compost aeration Breaking down charcoal Crushing glass Crushing drywall
 RE8/RE16 FINE SIFTING KIT	8,5/16 mm	Sifting damp/dry soil
 RQ20/RQ50 MEDIUM SIFTING KIT	20/50 mm	Sifting damp/dry soil Soil aeration

AREAS OF APPLICATION



The data provided above is not binding, as the manufacturer reserves itself the right to make improvements to its products at any time and with no advance notice. References to excavator weights are approximate and many may be subject to changes.

Rev. 2020 / 07



WWW.MBCRUSHER.COM