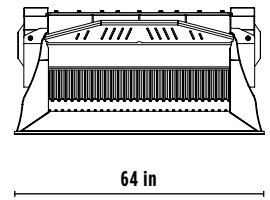
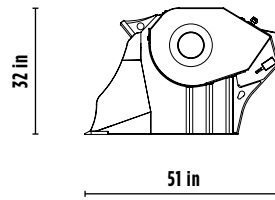
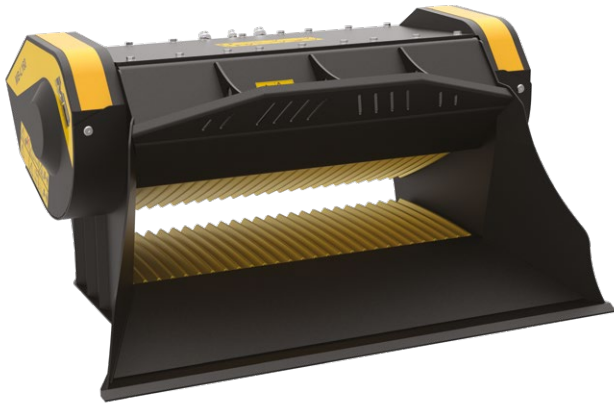


MB-L160 S2



ACCESSORIES

- RECOMMENDED SPARE PARTS KIT
- HOUR METER
- DUST SUPPRESSION KIT
- WARRANTY EXTENSION GOLD 24

SPECIFICATIONS

| | |
|--------------------|--|
| EQUIPMENT |  ≥ 9,900 ≤ 22,000 lbs |
| LOAD CAPACITY | 0.45 cy |
| OPENING DIMENSIONS | W 43 H 10 in |
| OUTPUT SETTING | ≥ 0,5 ≤ 2,5 in |
| DIMENSIONS | 51" x 64" x 32" H in |
| OIL FLOW | 29 gal/min |
| PRESSURE | > 2,900 PSI |
| COUNTER PRESSURE | < 73 PSI |
| WEIGHT | 3,197 lbs |



AREAS OF APPLICATION



RECYCLING



LARGE-SCALE
RESIDENTIAL
SITES



SMALL/
MEDIUM-SCALE
COMMERCIAL SITES



DEMOLITION

The data provided above is not binding, as the manufacturer reserves itself the right to make improvements to its products at any time and with no advance notice. References to excavator weights are approximate and many may be subject to changes.