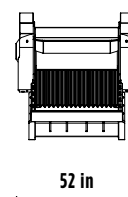
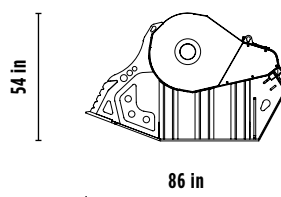
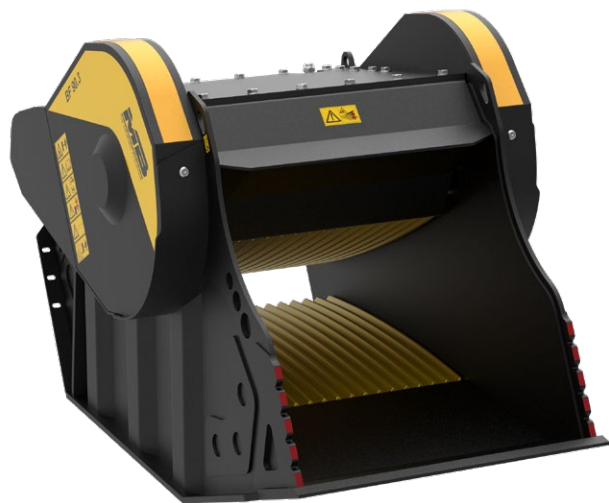


# BF 90.3 S4




## ACCESSORIES

- RECOMMENDED SPARE PARTS KIT
- FIXED COUPLING
- IRON SEPARATOR
- HOUR METER
- DUST SUPPRESSION KIT
- WARRANTY EXTENSION GOLD 24



## SPECIFICATIONS

EQUIPMENT	 $\geq 46,300$ lbs
LOAD CAPACITY	1.17 cy
OPENING DIMENSIONS	W 36 H 21 in
OUTPUT SETTING	$\geq 0,5 \leq 5,5$ in
DIMENSIONS	86" x 52" x 54" H in
OIL FLOW	47 gal/min
PRESSURE	$> 3,191$ PSI
WEIGHT	7,716 lbs

## AREAS OF APPLICATION



RECYCLING



URBAN  
JOB SITES



ROAD WORK



DEMOLITION



EXCAVATION



QUARRIES  
AND MINES



FOUNDRY



TUNNELS  
AND ENCLOSED  
SPACES

The data provided above is not binding, as the manufacturer reserves itself the right to make improvements to its products at any time and with no advance notice.  
References to excavator weights are approximate and many may be subject to changes.