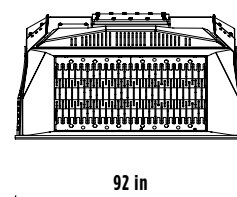
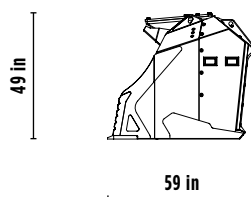
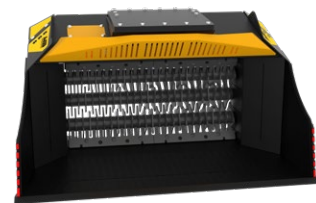
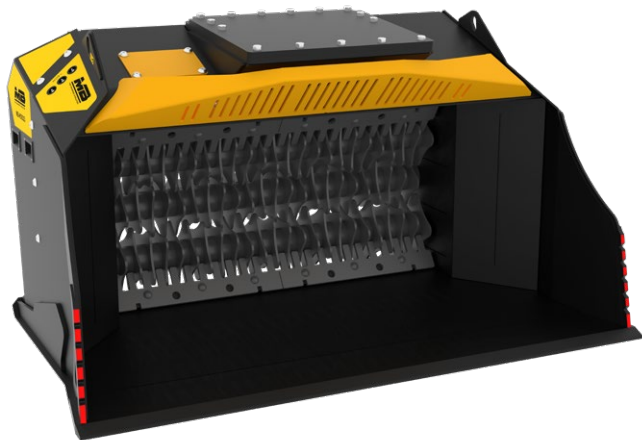


MB-HDS323





ACCESSORIES

- SPARE PARTS KIT
- FIXED COUPLING
- SHAFT HOLDER
- RC COMPOST KIT
- RM MIXER KIT
- RE8 FINE SIFTING KIT
- RE16 FINE SIFTING KIT
- RQ20 MEDIUM SIFTING KIT
- RQ50 MEDIUM SIFTING KIT

SPECIFICATIONS

EQUIPMENT

 $\geq 39,700 \leq 77,200$ lbs
 $\geq 22,000 \leq 33,100$ lbs

LOAD CAPACITY

2.16 cy

DIMENSIONS

92" X 59" X 49" H in

PRESSURE

> 3,600 PSI

COUNTER PRESSURE

< 73 PSI

WEIGHT





5,291 lbs

OIL FLOW

34 gal/min

SHAFT KITS

* shaft in closed position

KIT	SETTINGS	APPLICATION
 RC COMPOST KIT	1.5* in	Crushing drywall, brushwood and wood trusses Crushing foliage and waste wood Composting
 RM MIXER KIT	-	Crushing drywall, asphalt, light construction debris Composting Breaking down charcoal Soil Aeration
 RE8/RE16 FINE SIFTING KIT	0.3 in or 0.6 in	Screening damp soil, dry soil, light construction debris Crushing foliage and waste wood and charcoal Crushing drywall and brushwood Composting Soil Aeration
 RQ20/RQ50 MEDIUM SIFTING KIT	0.8 in or 2.0 in	Screening damp soil, dry soil, light construction debris Composting Soil Aeration

AREAS OF APPLICATION



RECYCLING



UTILITY WORK



COMPOSTING



INDUSTRIAL
AREAS



ENVIRONMENTAL
REMEDICATIONS



FINE
SIFTING



CRUSHING
ASPHALT

The data provided above is not binding, as the manufacturer reserves itself the right to make improvements to its products at any time and with no advance notice.
References to excavator weights are approximate and many may be subject to changes.