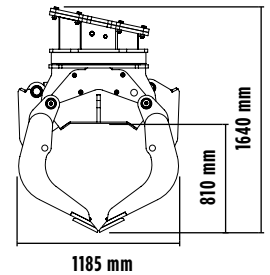
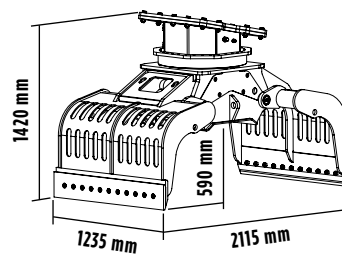


MB-G1200 S2


MB[®]
THE CRUSHING EVOLUTION

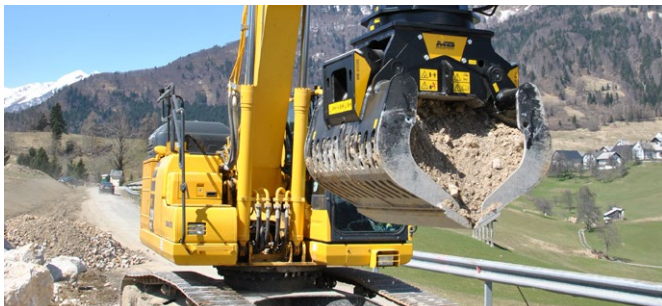


ACCESSORIES

- RECOMMENDED SPARE PARTS KIT
- FIXED COUPLING
- ROTATION POWER EXTENDER KIT (ROTATION FLOW RATE 40 ÷ 70 L/MIN)
- GRIP IMPROVEMENT KIT
- MULTI-PURPOSE BLADE KIT
- RUBBER PROTECTION KIT
- CLAM SHELL KIT
- 24 MONTHS WARRANTY

SPECIFICATIONS

EQUIPMENT	 ≥ 18 ≤ 30 Ton
LOAD CAPACITY (CLAWS CLOSED)	0,71 m ³ / 710 L
FLOW DIRECTION	20 ÷ 35 l/min.
OIL FLOW (OPEN/CLOSE)	70 l/min.
PRESSURE OF ROTATION	> 220 bar
PRESSURE (OPEN/CLOSE)	300 ÷ 400 bar
WEIGHT	1,60 Ton
ROTATION	360°



AREAS OF APPLICATION



DEMOLITIONS



URBAN
CONSTRUCTION
SITES



PORTS AND
FREIGHT
TERMINALS



QUARRIES



RECYCLING AND
WASTE SORTING
FACILITY

The data provided above is not binding, as the manufacturer reserves itself the right to make improvements to its products at any time and with no advance notice. References to excavator weights are approximate and many may be subject to changes.

Rev. 2019 / 03

in f t You Tube you ru

WWW.MBCRUSHER.COM