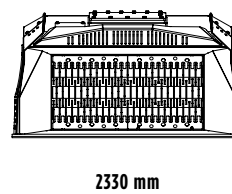
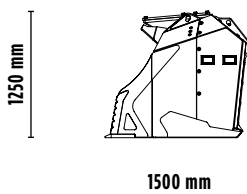
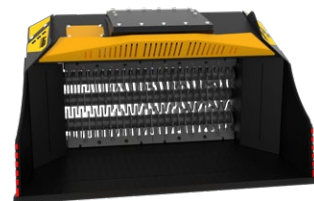
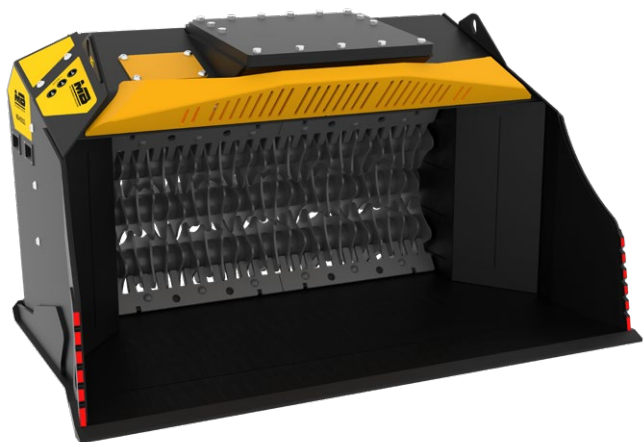


# MB-HDS323





## ACCESSORIES

- KIT PIÈCES DE RECHANGE
- ATTACHE
- CONTENANT PORTE-ROTOR
- KIT COMPOSTAGE RC
- KIT MÉLANGEUR RM
- KIT CRIBLAGE FIN RE8
- KIT CRIBLAGE FIN RE16
- KIT CRIBLAGE MOYEN RQ20
- KIT CRIBLAGE MOYEN RQ50

## CARACTÉRISTIQUES TECHNIQUES

MACHINE OPÉRATRICE

  $\geq 18 \leq 35$  Ton

  $\geq 10 \leq 15$  Ton

CAPACITÉ DE CHARGEMENT

1,65 m<sup>3</sup>

DIMENSIONS

2330 x 1500 x H 1250 mm

PRESSION

> 250 bar

CONTRE-PRESSION

< 5 bar

POIDS





2,4 Ton

DÉBIT HUILE

130 l/min.

## KIT ROTORS

\* rotor en position de fermeture

KIT	RÉGLAGE	TYPE DE TRAITEMENT
 KIT COMPOSTAGE RC	36,5* mm	Concassage de plâtre, de branches et de poutres en bois Broyage de bois provenant de plantes et de feuillages   Compostage
 KIT MÉLANGEUR RM	-	Concassage de plâtre et de bitume, inertes génériques humides   Compostage Broyage de carbone   Aération du terrain
 KIT CRIBLAGE FIN RE8/RE16	8,5/16 mm	Criblage de terre humide, de terre sèche, de matériaux inertes humides   Compostage   Aération du terrain Broyage de bois provenant de plantes, feuillages et de carbone   Concassage de branches et de plâtre
 KIT CRIBLAGE MOYEN RQ20/RQ50	20/50 mm	Criblage de terre humide, de terre sèche, de matériaux inertes humides   Compostage   Aération du terrain

## DOMAINES D'APPLICATION



RECYCLAGE



CANALISATIONS



COMPOSTAGE  
ET EXCAVATIONS



ENVIRONNEMENTS  
INDUSTRIELS



RÉHABILITATION DE  
L'ENVIRONNEMENT



CRIBLAGE FIN



CONCASSAGE  
DU BITUME

The data provided above is not binding, as the manufacturer reserves itself the right to make improvements to its products at any time and with no advance notice.  
References to excavator weights are approximate and many may be subject to changes.