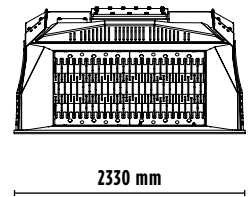
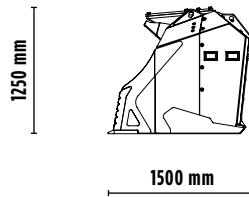
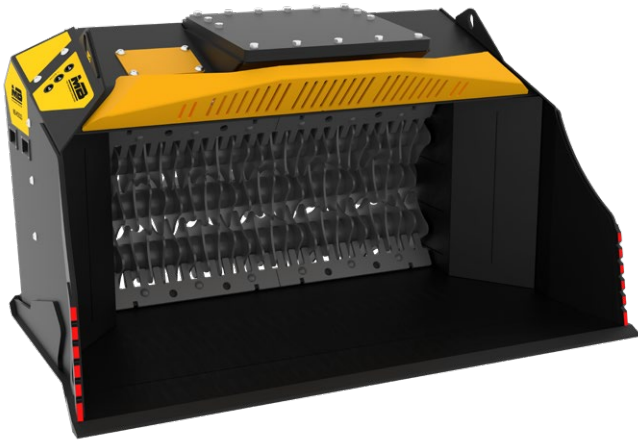


MB-HDS323

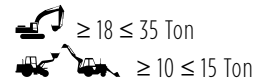


ACCESSORIES

- SPARE PARTS KIT
- FIXED COUPLING
- SHAFT HOLDER
- RC COMPOST KIT
- RM MIXER KIT
- RE8 FINE SIFTING KIT
- RE16 FINE SIFTING KIT
- RQ20 MEDIUM SIFTING KIT
- RQ50 MEDIUM SIFTING KIT

SPECIFICATIONS

EQUIPMENT



LOAD CAPACITY

1,65 m³

DIMENSIONS

2330 x 1500 x H 1250 mm

PRESSURE

> 250 bar

COUNTER PRESSURE

< 5 bar

WEIGHT





2,4 Ton

OIL FLOW

130 l/min.

SHAFT KITS

* shaft in closed position

KIT	SETTINGS	APPLICATION
 RC COMPOST KIT	36,5* mm	Crushing drywall, brushwood and wood trusses Crushing foliage and plant wood Composting
 RM MIXER KIT	-	Crushing drywall, asphalt, light construction debris Composting Breaking down charcoal Soil Aeration
 RE8/RE16 FINE SIFTING KIT	8,5/16 mm	Screening damp soil, dry soil, light construction debris Crushing foliage and plant wood and charcoal Crushing drywall and brushwood Composting Soil Aeration
 RQ20/RQ50 MEDIUM SIFTING KIT	20/50 mm	Screening damp soil, dry soil, light construction debris Composting Soil Aeration

AREAS OF APPLICATION



RECYCLING



UTILITY WORK



COMPOSTING



INDUSTRIAL
AREAS



ENVIRONMENTAL
REMEDICATIONS



FINE
SIFTING



CRUSHING
ASPHALT

The data provided above is not binding, as the manufacturer reserves itself the right to make improvements to its products at any time and with no advance notice. References to excavator weights are approximate and many may be subject to changes.

Rev. 2019 / 03



WWW.MBCRUSHER.COM