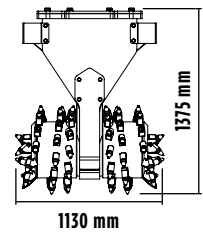
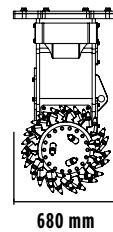
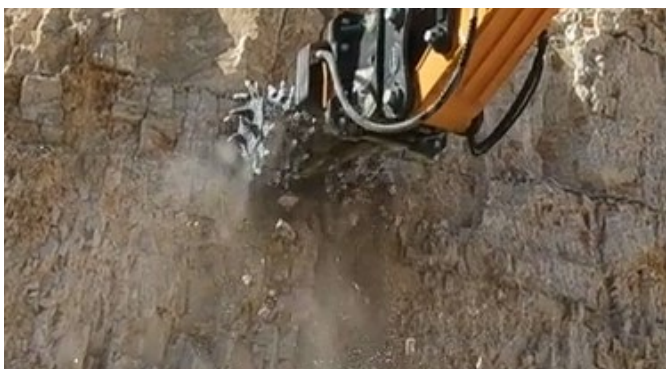


# MB-R900



## ACCESSORIES

- KIT PIÈCES DÉTACHÉES CONSEILLÉ
- ATTACHE
- TAMBOUR INTERCHANGEABLE LOW-SET
- TAMBOUR INTERCHANGEABLE FULL-SET
- KIT BRUMISATEUR
- KIT RÉDUCTION DES HAUTES TEMPÉRATURES
- KIT PICS ROCHE OU ASPHALTE
- GARANTIE 24 MOIS



## CARACTÉRISTIQUES TECHNIQUES

MACHINE OPÉRATRICE	 ≥ 19 ≤ 35 Ton
DEBIT D'HUILE (MIN)	250-350 l/min.
PRESSION MAXIMALE	> 350 bar
CONTRE-PRESSION DRAINAGE MAX	< 4 bar
COUPLE DE SORTIE	13200 Nm
EFFORT DE CISAILEMENT	40000 N
POIDS	1,4 Ton
TOURS/MIN.	60/80 min/max

## DOMAINES D'APPLICATION



TUNNELS  
ET GALERIES



CANALISATIONS



CHANTIERS  
URBAINS



TRAVAUX  
ROUTIERS



PROFILAGE DE MURS  
EN ROCHER ET BÉTON  
CARRIÈRES



DEMOLITIONS



EXCAVATIONS  
DE TERRAIN ET  
RÉALISATION DE  
FONDATIONS



ESPACES  
AGRICLES ET  
FORESTIERS

The data provided above is not binding, as the manufacturer reserves itself the right to make improvements to its products at any time and with no advance notice.  
References to excavator weights are approximate and many may be subject to changes.

Rev. 2019 / 03



WWW.MBCRUSHER.COM