

Neither the heat and dust of the Middle East nor the very hard rock in the region can stop MB Crusher equipment from working.

In an area outside Jeddah in the Hejaz region, the second-largest city in Saudi Arabia, MB's BF135.8 crusher bucket and the MB-R900 drum cutter are working incessantly, day and night, to recover and process many cubic metres of local material. Fitted to a Doosan 420LCV excavator, the BF135.8 recovers aggregates which will then be used for the creating of roadbeds.

Together with the MB Crusher eco-crusher, one of the latest innovations from the company is also being used: the MB-R900 drum cutter, the largest model in the range, the only cutter in the world to be fitted with the Direct Drive Twin Motor System, a patented system which allows differentiated distribution of power to the two cutting heads. Once cut, material can be processed with the crusher bucket in order to obtain the ideal size for the creation of roadbeds, or to fill ditches.

It fits perfectly into the scope of the Vision 2030 plan, a true transformation project which will support the Kingdom for the next few years, placing focus on increasing the efficiency of the government, promoting economic growth, expanding the private sector and creating job opportunities.

GIANT OF CRUSHING

ITALIAN MOBILE CRUSHING SPECIALIST MB CRUSHER HAS FOUND SUCCESS IN THE MIDDLE EAST WITH ITS CRUSHER BUCKETS AND MOBILE SCREENS, USING ITS INNOVATIVE CONCEPT AND QUALITY TO MASTER THE CONDITIONS AND ADD VALUE TO JOB-SITES



MB Crusher's mobile crushing buckets can be used with any excavator to crush material directly onsite, saving time and money, as well as providing a greener solution.

"Time is a critical factor for us, which means that having a machine like the MB crusher bucket on-site is really helpful, considering the amount of material we need to process... It also requires very low amounts of water, which makes it easy to work with the excavators we have on-site"

"Innovation combined with economic and environmental sustainability – that is the philosophy behind MB Crusher products, the pioneer of the revolution of crushing methods," says Najmedine Sahraoui, deputy GM of MB Crusher in the Middle East.

"The Jeddah project is an ambitious one which will change the face of the country. It is a project that requires cutting-edge machinery, constructed to diversify work and provide added value to the companies that use it. MB Crusher products are an ideal fit in this situation, created to make a difference in every work-site and transform waste from works into earnings."

Innovative products such as those made by MB Crusher can also make a difference in specific projects such as the National Project Management Organisation (NPMO, known as Mashroat), which will support Saudi government agencies in delivering complex infrastructure projects in line with Saudi Arabia's Vision 2030 plan to modernise the Kingdom's administration.

"The new contract builds on American contractor Bechtel's experience in assisting the Royal Commission of Jubail and Yanbu in the development and expansion of the Jubail and Ras Al Khair industrial cities. Bechtel has worked on significant infrastructure projects in Saudi Arabia, including the King Fahd and King Khalid airports and the Ras Al Khair aluminium smelter, and MB Crusher products have been a constant presence at their work-sites," says Sahraoui.

Over in Qatar, it is over 60,000 cubic metres of limestone that the MB Crusher bucket is crushing. The BF90.3 crusher bucket has been working day and night in one of the capital's largest sites in Barwa City in Doha. This is the second stage of the construction of Oryx International School, an Orbital Education Group school for Qatar Airways employees' children.

The construction of the Oryx International School in Doha consists of two stages. The first stage, Oryx Minor, was completed in November 2016, when the first buildings were opened. Today, the school is operational.

The second stage, Oryx Major, started in June 2017 and is planned to be completed next month. It involves the construction of 41,000sqm of campus and a three-floor building with new classrooms, laboratories and gyms for over 2,000 students. This means it is an important project, involving large companies and a number of businesses, which will provide students with high-quality education in a safe and well-equipped environment.

"The BF90.3 crusher bucket was purchased by Boom General Contractors, a large

**BF90.3 S4 CRUSHER BUCKET
MB'S ORIGINAL REVOLUTION**

According to MB Crusher, its flagship model, the BF90.3, was the world's first crusher bucket.

Designed to resist the most challenging conditions on any site, it is extremely compact and versatile. Periodically updated and made more powerful over the years, it is suitable for all crushing operations, even the most challenging, and maintains the same results in terms of performance with all types of material.

But now, the Italian company says, a good thing has gotten even better with the introduction of the BF90.3 S4 – a more powerful and updated version of the company's flagship product, exactly one year on from the last update.

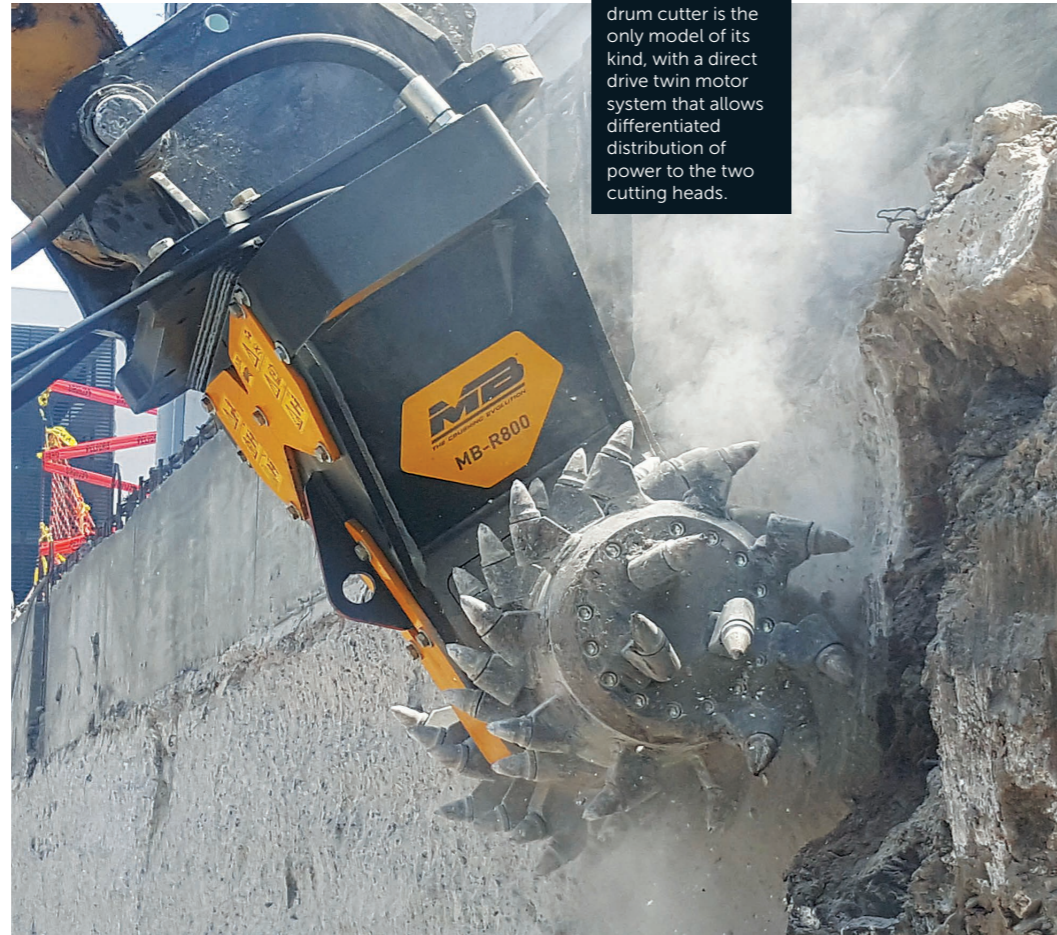
Productivity has been increased thanks to a functional restyling of the internal structure of the machine, which allows an increase in performance and strength. Reliability has also been improved in terms of stability and working precision, and a reduction has been effected

simultaneously in the standard maintenance time thanks to an integrated centralised greasing system.

Also, thanks to higher levels of power and the strengthening of parts and sections subject to the most stress and wear, the updated model offers increased resistance and performance, even in the most extreme operational conditions.

MB says its R&D department has taken into consideration the suggestions of its clients, who use the equipment in the widest range of applications. Studying their experiences and learning from them has provided the company many solutions and performance enhancement methods that benefit the equipment's application on job-sites.

As Diego Azzolin, MB's head of production, says: "Revolution and innovation are not static factors, but instead present a continuous challenge for improvement." And with the BF90.3 S4, MB claims to have risen to that challenge.



↓
The MB R900 drum cutter is the only model of its kind, with a direct drive twin motor system that allows differentiated distribution of power to the two cutting heads.

construction company from Qatar that is following the project. BF90.3 is working to recycle thousands of cubic metres of inert waste materials from the excavations for the foundations and the underground car park," says Sahraoui.

Mounted on a Volvo EC240B excavator, the BF90.3 crushes the material with different sizes – to change the resulting soil texture, thickness can be added to or removed from the MB crusher in just a few minutes. The crushed rock will be reused to fill on-site excavations and as subgrade for the roads within the school.

"We chose the MB crusher bucket because we can crush the material directly on-site without having to bring a large crushing station," points out Pier Matter, project manager at Boom General Contractors. "This saves us transport costs for other machinery, as the crusher bucket is carried together with the excavator. Once it is on-site, it can be assembled very quickly and we are ready to work in a few minutes. It is also easy to use. From the excavator cab, the operator picks up the material with the crusher bucket and crushes it on the spot."

"Time is a critical factor for us, which means that having a machine like the MB crusher bucket on-site is really helpful, considering the amount of material we need to process. The crusher bucket does

not need special maintenance in addition to basic maintenance. It also requires very low amounts of water, which makes it easy to work with the other excavators we have on-site."

The first crusher bucket to ever be placed on the market, today BF90.3 has reached its fourth series. It has become more productive – it can yield up to 42 cubic metres per hour depending on the processed material – while its size has been reduced and it is even more compact. Series 4 can yield materials of different size – 15 to 140 mm. Like all MB Crusher products, it is fully manufactured in Italy and is Hardox-in-my-Body certified. This means it is manufactured with first-class wear-resistant heavy-duty materials.

These successes in the Middle East mean the MB Crusher brand is not only well-known in the region, but also well-respected. With the combination of being well-respected in its field and having numerous projects in the region that can use MB Crusher products, attending The Big 5 Heavy in Dubai, the region's first stand-alone show for the construction machinery sector, was a no-brainer for the Italian manufacturer.

According to Sahraoui, MB Crusher's presence at The Big 5 Heavy was all about showcasing the brand new series of crusher bucket BF 90.3, screening bucket MB-S18 plus drum cutter MB-R900, all ideal for infrastructure projects.



"Innovation combined with economic and environmental sustainability – that is the philosophy behind MB Crusher products, the pioneer of the revolution of crushing methods"

MB's market is highly correlated to overall infrastructure development. The GCC infrastructure market has an estimated value of over \$400bn, and there are currently 1,246 ongoing projects in different stages of the construction lifecycle; for these reasons, The Big 5 Heavy is an event where MB Crusher's presence was a certainty.

According to Sahraoui, with MB crushing and screening buckets, contractors have the advantage of crushing and screening the existing materials on-site, eliminating the need to load demolished material onto trucks or dumpers and take it to a waste dump, and also saving money over buying new materials. For road construction works, it's possible to crush the material and reuse it directly on site as GSB, drainage filling and trench filling.

MB's attachments use the hydraulic system on excavators, skid loaders and backhoes, allowing the flexibility to work in tight areas, difficult access locations, steep slopes and urban areas. Contractors will be able to move their plant wherever they need it to go, reuse materials immediately at the job site and provide an environmentally friendly option in recycling waste materials.

"The Middle East Market is a dynamic and growing market. There are many ongoing and future projects where MB attachments are the solution," says Sahraoui. ●

**GLOBAL RECYCLING DAY
SUPPORTING A GREEN INITIATIVE**

Recycling has been called the seventh most important resource in the world. It is much more than an opportunity – today, it is ever more a solution for people, for the environment, for companies. In view of this, March 18 was celebrated as Global Recycling Day, to see recycling as a resource, not a waste.

As a company whose products and solutions are geared towards recycling in every part of the world, MB Crusher supports this initiative. According to the company, construction and demolition waste makes up about 30% of all the waste produced in Europe today. Many European countries are proposing laws to force companies to recycle their waste. This is happening across the Atlantic, as well.

Continuing to accumulate inert material and not managing it has become an unsustainable cost for our planet. Companies must

bear the costs of waste disposal, in compliance with environment laws. This is where MB Crusher says it is at the forefront of the cause.

According to Najmeddine Sahraoui, there are solutions today for waste management at construction job-sites: crush and recycle. And the MB crusher bucket is one of the tools that makes this possible, crushing debris and excavation materials in the same construction site where they were produced, meaning a company makes fewer trips to move the material from the site to the landfill. This complies with the new truck transfer limitations that more municipalities are imposing and also respects the environment by reducing pollution and the exploitation of resources.

"Brick, cement, mortar, marble – the MB crusher bucket reduces the blocks into different sizes, depending on what the site requires. Then the iron remover

installed on the bucket separates the stones from the iron. And during the operation, the nebuliser reduces the dust from the crushing to allow use in any location. The material is cleaned with the MB screening bucket, ready to be reused. Or it is cleaned before crushing, to reduce crushing time by 60%," Sahraoui says.

This is how demolition waste becomes a productive resource on-site for filling the foundations of new constructions, pipe excavations, road surfacing or in gardens as decoration elements. And, if not used on-site, it becomes a commercial resource that can be sold to other companies.

"MB Crusher products help to stop the progressive impoverishment of the planet, raising awareness that enhanced inert material is the true wealth of each production. Global Recycling Day is witness to this principle and we fully support it," says Sahraoui.