

CRUSHING IT WITH SAVINGS

Najmeddine Sahraoui, deputy general manager, Middle East and Africa, MB Crusher, talks about the feasibility and convenience of deploying crusher buckets at construction sites

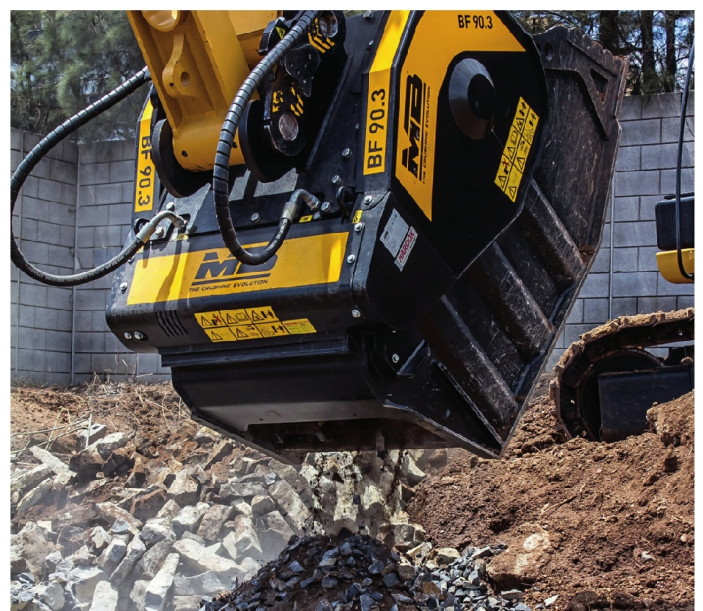
Transportation of materials to and from sites, to and from the crusher unit, and to and from the dump, are equally important cost considerations as procurement of materials and fuel, personnel, and maintenance. In addition to capital expenditure, operational and life cycle costs are increasingly becoming crucial factors for purchase decisions.

Crusher buckets developed for on-site crushing of inert materials work by taking advantage of the hydraulic system of the excavators,

skid loader, loader and backhoe loaders to which they are attached. Being able to crush all type of inert waste material directly on site reduces the use of mechanical pieces of equipment and leasing costs.

According to Najmeddine Sahraoui, crushing directly with excavators saves personnel, time and fleet costs and helps transform waste into profits.

"Savings are easily recognisable with MB products. Transportation costs are eliminated and fuel costs are reduced. The personnel



Najmeddine Sahraoui, deputy general manager, Middle East and Africa, MB Crusher.

MB
THE CRUSHING EVOLUTION

IDEAS,
NOT
THEORIES.



requirement is also minimised, as a single operator can manage the crushing activities as well as the maintenance requirements of the machine. MB Crusher has created a product line that makes it possible to manage the complete recycling phase directly on-site, simplifying the operations of crushing, screening and handling of the aggregates. Crusher and screening buckets, drum-cutters and sorting grapples are installed directly to the operating machine and powered by its hydraulic system," says Sahraoui.

Sahraoui points out that MB Crusher is the only manufacturer in the world able to offer a complete range of 26 attachments, crushing and screening buckets, drum-cutters and grapples for excavators, loaders, skid steer loaders and backhoes from 2.8 to 70+ tons, with a 24 months warranty.

"MB Crusher is the inventor of the crusher bucket and offers the widest range of crusher buckets for all operating machines. We have crusher buckets for excavators, loaders, backhoe loaders and skidsteers, so we can satisfy all the customers' requirement. MB Crusher holds a series of certifications, including UNI EN ISO 9001:2008, CE, TUV, GOST and RINA and employs Hardox-certified materials to give customers the best possible products. MB Crusher's focus on innovation is proven by the number of awards that the company has

“Crushing directly with excavators saves personnel, time, and fleet costs and helps transform waste into profits. A single operator can manage crushing and maintenance activities.”

Najmeddine Sahraoui

won over the years, including the 1st Grand Prix at the 2007 International Exhibition of Inventions in Geneva, something which no Italian company had achieved for more than 20 years," he says.

MB crusher buckets use an AAA + type a hydraulic system. The crusher bucket has a low hydraulic demand in terms of pressure and hydraulic flow rate. The AAA + plumbing series enables hydraulic cooling during the work steps to lengthen excavator life.

"MB buckets are the only ones in the world that does not need drainage, and also the ones that ensure higher productivity compared to the countless imitations of the original BF unit. MB's crushing power exceeds 110m³/h, due to

a power enhancer which allows to crush the hardest and tenacious materials as basalt and granite, ensuring a finished product with the lowest price of the market and in compliance with the high quality standards required for waste material reuse. The extreme compactness and low center of gravity improves balance and drastically reduces the strain on the excavator arm, eliminating impact and vibration. Equipped with a dust suppression system, iron separator and producing a low noise impact, it can be easily used in any construction site, in total compliance with environmental regulations," says Sahraoui.

Although there's not particular best-selling model, MB's biggest crushers seem to find increasing demand in the Middle East, according to Sahraoui.

"A large number of customers use the BF90.3 crusher bucket for excavators weighting up to 21 tons and the BF120.4 crusher bucket for excavators weighing 30 tons and above for their daily operations in road-construction, piping operations, demolitions and urban sites. Quarry owners usually choose the biggest models, the BF135.8 and the BF150.10, which is the biggest crusher bucket in the world, for excavators weighting up to 70 tons. These models are very efficient in quarry locations both in terms of performances and productivity," he says. **EMV**