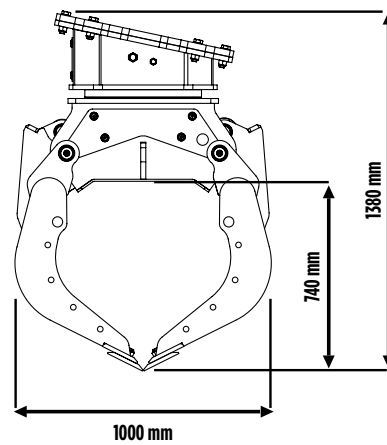
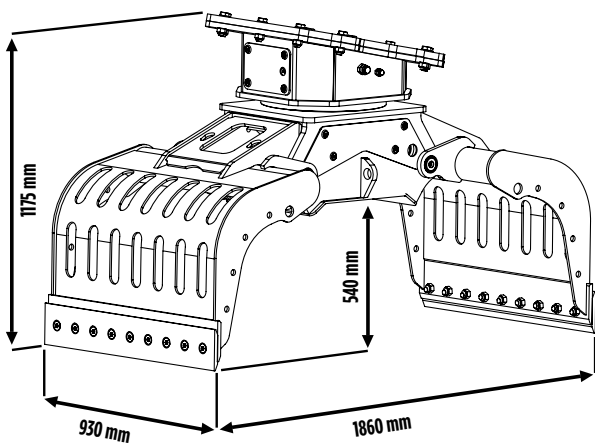
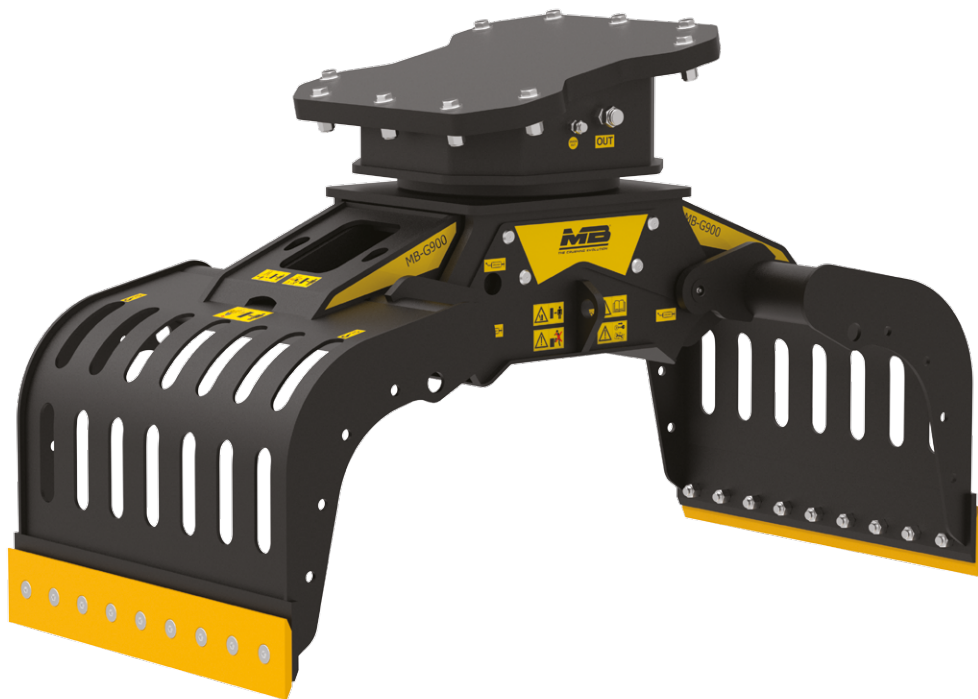


# MB-G900





## MB-G900

The MB-G900 grapple combines notable operational agility, extreme sensitivity and hold precision, and its closing strength can be gradually increased to the point of carrying out demolition operations on walls.


## ACCESSORIES

- RECOMMENDED SPARE PARTS KIT
- FIXED COUPLER
- QUICK FEMALE COUPLER
- 24 MONTHS WARRANTY

## AREAS OF APPLICATION

SMALL AND MEDIUM-SCALE URBAN SITES  
DEMOLITION

## SPECIFICATIONS

EQUIPMENT	LOAD CAPACITY (CLAWS CLOSED)	FLOW DIRECTION	OIL FLOW (OPEN/CLOSE)
 ≥ 12 ≤ 18 Ton	0,43 m <sup>3</sup> / 430 L	8 ÷ 20 l/min.	30 l/min.
PRESSURE OF ROTATION	PRESSURE (OPEN/CLOSE)	WEIGHT	ROTATION
160 bar	200 ÷ 400 bar	0,78 Ton	360°