



PRODUCT CATALOGUE

REDUCE >> REUSE >> RECYCLE

MB CRUSHER: ADVANCED, VERSATILE, TOUGH.

For over 20 years, **MB CRUSHER** has been designing and **manufacturing attachments** for heavy equipment of all sizes. Perseverance and resilience led the company to invent the first jaw crusher for excavators. Investing in technological research has contributed to the development of MB's products, which can be installed on any carrier machine, turning them into real mobile crushers while improving performance and allowing companies to make the most of the resources available on their job sites. **MB CRUSHER** over the years has become **the benchmark in the construction equipment industry worldwide**, offering a full range of products to provide companies with the solutions they seek.

MB CRUSHER HAS SOLUTIONS FOR EVERY CARRIER MACHINE

Crushers, screening buckets, padding buckets, drum cutters, sorting grapples and demolition pulverizers. **MB CRUSHER** provides entrepreneurs with the widest range of attachments capable of **making construction sites** of any size, **independent and competitive** regardless of the job's nature and scope of action. All of MB CRUSHER's equipment was designed to solve **all kinds of obstacles**, even the most extreme. From skid steers, backhoes, telehandlers, mini and midi excavators, from 1,3 ton machines to excavators weighing 70 ton; **there will be a suitable MB CRUSHER unit**. Installation is straightforward and quick, whether it's for the larger machines in the MB range or the smaller ones.



100% MADE IN ITALY

MB Crusher is an **Italian company** with a worldwide presence. All of the equipment production phases take place at the headquarters in Fara Vicentino, Italy. More than 45.000 square meters host research and development laboratories, production departments, sales, marketing and administrative offices. Here, every piece of equipment is designed, assembled and distributed to international markets by more than **250 people**. Brazil, China, France, Germany, Japan, India, Indonesia and United States. With subsidiaries in Brazil, China, France, Germany, Japan, India, Indonesia, and the United States, MB CRUSHER has a worldwide network. Nine international subsidiaries support the headquarters in promoting and distributing products across all continents. A network of over 950 dealers helps sell MB CRUSHER's products in **more than 150 countries**.



Find out more

PRODUCTS GUARANTEED AND CERTIFIED QUALITY

Guaranteeing a safe product, that is compliant with international regulations is essential for everyone at MB CRUSHER. All aspects (from assembly to the finished product) are constantly certified, to meet the markets' needs and to **guarantee** the customer receives a product that **is accredited for its good quality**.

PRODUCT CERTIFICATIONS

2006/42/CE 2014/68/UE
Machinery Directive PED Directive

EN 12100:2010

Safety in machinery design

QUALITY CERTIFICATION

ISO 9001
Quality management systems

PROCESS CERTIFICATIONS

UNI EN ISO 9606-1:2017
UNI EN ISO 14732

UNI EN ISO 15614-1: 2008

Organization with qualified welding processes and personnel

WITH MB CRUSHER YOU CRUSH EVEN TIME.

ONE ATTACHMENT TO WORK
FASTER AND SAVE MONEY.



WATCH THE VIDEO



The jobsite becomes **environmentally friendly**:
-less CO2
-no landfill disposals
-reduce pollution emissions from vehicles transporting **material**.

BEFORE/ AFTER

MB CRUSHER'S IMPACT ON DIFFERENT MATERIALS

BUILDING OR CONSTRUCTION MATERIALS

Demolition waste
Excavated soil
Asphalt

Reinforced concrete
Bricks

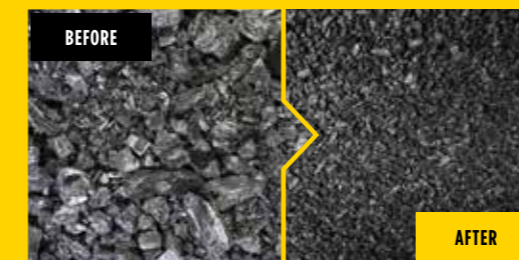


ROCKS

Coal	Marble
Porphyry	River stone
Limestone	Calcium carbonate-gypsum
Granite	
Basalt	

ORGANIC MATERIALS

Foliage
Sand, soil



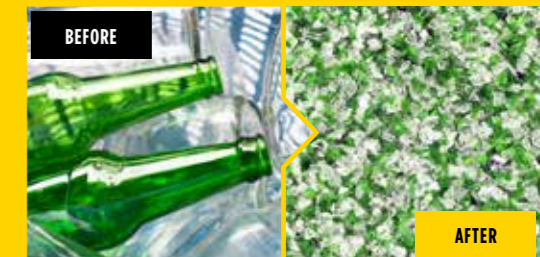
FOUNDRY WASTE AND METALS

Casting mold waste and slag	Iron
Foundry sand	Steel and aluminum slag
Copper slag	

RUBBISH

Garbage
Nylon and plastic
Bituminous waste

Glass
Ceramics



POLES AND COLUMNS

Concrete slabs	Vineyard poles
Concrete slabs	Light poles
Gratings	Railway sleepers

DIDN'T SEE YOUR MATERIAL?

CONTACT US



CRUSHER BUCKETS



FOR EXCAVATORS,
BACKHOES, LOADERS
AND SKID STEER

3 - 100 ton

FIND OUT
MORE

REDUCED VIBRATION

Control devices reduce vibration on the arm of the carrier machine.

EASY MAINTENANCE

Quick and easy maintenance: no oil change required.

WIDE MOUTH OPENING

Widest crusher mouth opening per weight of the equipment, available on the market.

HYDRAULIC PROTECTION

The latest hydraulic system extends and protects the life of the excavator.

LOW NOISE EMISSIONS

The frame is designed to minimize noise and vibration.

GUARANTEED OUTPUT SIZE

Regular output size is guaranteed even with worn out jaws.

OPTIMAL DESIGN

Designed to pick up and process material with ease while guaranteeing quality and increased production rates.

The jaw crushers turn any carrier into a real mobile crusher.

MB CRUSHER's range of crusher buckets is the largest in the world with over 90% world's market share.

APPLICATION AREAS



DEMOLITIONS



ROAD WORKS



QUARRY



MINES



ENCLOSED SPACES



TUNNELS



FOREST MAINTENANCE



FOUNDRIES



INERT MATERIAL RECYCLING



URBAN CONSTRUCTION SITES



PIPELINES

CRUSHER BUCKETS



FOR EXCAVATORS,
BACKHOES, LOADERS
AND SKID STEER

FIND OUT
MORE

6,5 - 100 ton



Installed on heavy equipment, MB's jaw crushers transform waste into ready-to-use material in a single crushing phase. They are versatile and high-performing machines, created to meet the needs to crush materials in quarries, landfills, urban and non-urban construction sites regardless of the location's size.



OPTIONAL ACCESSORIES

24 MONTH WARRANTY



HOURLY METER



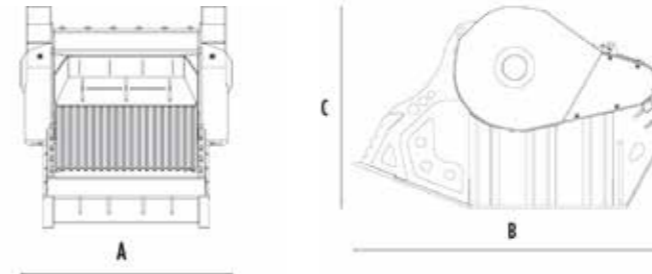
24 V IRON SEPARATOR



DUST SUPPRESSION KIT



DIMENSIONS



MODELS

	UNITS	MB-C50 S4	BF60.1 S4	BF70.2 S4	BF80.3 S4	BF90.3 S4	BF120.4 S4	BF135.8	BF150.10
Recommended excavator	ton	6,5 - 10	10 - 18	16 - 25	18,5 - 29	21 - 32	30 - 45	43 - 80	70 - 100
Recommended backhoe loader	ton	8 - 9*	-	-	-	-	-	-	-
Weight	ton	0,75	1,65	2,30	3,00	3,50	4,80	7,50	11,50
Load capacity	m ³	0,15	0,55	0,65	0,70	0,90	1,30	1,80	2,30
Pressure	bar	200 - 250	220 - 280	220 - 280	220 - 280	220 - 280	220 - 280	230 - 280	230 - 280
Back pressure	bar	< 10	< 10	< 10	< 10	< 10	< 10	< 10	< 10
Oil flow rate**	l/min	90 - 120	120 - 150	150 - 220	150 - 220	180 - 220	190 - 250	320 - 380	380 - 430
Crusher mouth width	mm	590	610	750	880	910	1205	1300	1450
Crusher mouth height	mm	280	500	510	510	540	540	600	700
Size A	mm	1000	1000	1150	1330	1340	1620	1880	2130
Size B	mm	1240	1745	2000	1970	2185	2185	3000	3600
Size C	mm	770	1100	1200	1325	1390	1390	1700	2170

*Only compatible with the posterior boom of a Backhoe.
**The minimum hydraulic flow rate value must be alongside the required operating pressure.

PRODUCTIVITY

CRUSHING OUTPUT ADJUSTMENT	UNITS	MB-C50 S4	BF60.1 S4	BF70.2 S4	BF80.3 S4	BF90.3 S4	BF120.4 S4	BF135.8	BF150.10
15 mm	m ³ /h	4	7	9	10	12	15	-	-
20 mm	m ³ /h	4,8	7,7	10	11	13,2	16,4	-	-
30 mm	m ³ /h	6,3	9	12	13	15,5	19,2	-	-
40 mm	m ³ /h	7,8	10,4	14	15	17,8	22	38,7	-
50 mm	m ³ /h	9,3	11,7	16	17	20	24,8	43,2	-
60 mm	m ³ /h	10	13	18	19	22,5	27,6	47,6	-
70 mm	m ³ /h	-	14,4	20	21	24,8	30,4	52,2	-
80 mm	m ³ /h	-	15,8	22	23	27,2	33	56,6	-
90 mm	m ³ /h	-	17,1	24	25	29,5	36	61,1	-
100 mm	m ³ /h	-	18,5	26	27	31,8	38,8	65,6	-
110 mm	m ³ /h	-	19,8	28	29	34,2	41,6	70,1	73,1
120 mm	m ³ /h	-	21	30	31	36,5	44,4	74,5	76,6
130 mm	m ³ /h	-	23	31	33	38,8	47,2	79,1	82,5
135 mm	m ³ /h	-	-	-	34	41	48,6	81,3	84,1
140 mm	m ³ /h	-	-	-	-	42	50	83,5	87,6
145 mm	m ³ /h	-	-	-	-	-	53	85,7	91,1
150 mm	m ³ /h	-	-	-	-	-	-	88	95
200 mm	m ³ /h	-	-	-	-	-	-	-	120

To obtain the values in ton/h, multiply the data listed in the table by the specific weight of your material.
These values are indicative only, estimated with materials of medium load capacity.

CRUSHER BUCKETS



FOR EXCAVATORS,
BACKHOES, LOADERS
AND SKID STEER

3 - 17 ton

FIND OUT
MORE



Installed on loaders, skid steers, backhoe loaders, mini-excavators and excavators, they crush any inert material. Despite their compact size, they offer high productivity standards while maintaining the unique performance characteristics that MB CRUSHER buckets have. They provide solutions for any needs that arise in small construction sites and particularly tight spaces.



OPTIONAL ACCESSORIES

24 MONTH WARRANTY



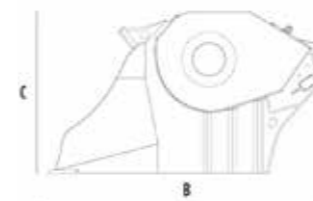
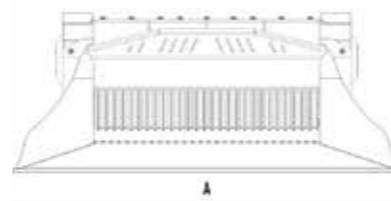
HOURLY METER



DUST SUPPRESSION KIT



DIMENSIONS



MODELS



	UNITS	MB-L120 S2	MB-L140 S2	MB-L160 S2	MB-L200 S2
Recommended excavator	ton	7,5 - 12	7,5 - 13	11 - 16	12 - 17
Recommended backhoe loader	ton	5 - 9	5 - 10	7 - 11	7 - 12
Recommended skid steer loader*	ton	3 - 6	3 - 6	5 - 7	6 - 8
Weight	ton	0,95	0,98	1,45	1,50
Load capacity	m ³	0,19	0,20	0,35	0,43
Pressure	bar	200 - 250	200 - 250	200 - 280	200 - 280
Back pressure	bar	< 10	< 10	< 10	< 10
Oil flow rate**	l/min	95 - 120	98 - 150	110 - 200	120 - 200
Crusher mouth width	mm	790	800	1180	1185
Crusher mouth height	mm	250	250	280	280
Size A	mm	1230	1530	1630	2030
Size B	mm	1230	1230	1300	1435
Size C	mm	800	800	835	835

* See legal regulations on loading and tipping UNI ISO 14397 - 1:2008.

**The minimum hydraulic flow rate value must be alongside the required operating pressure.

PRODUCTIVITY



CRUSHING OUTPUT ADJUSTMENT	UNITS	MB-L120 S2	MB-L140 S2	MB-L160 S2	MB-L200 S2
15 mm	m ³ /h	6	8	9	10
20 mm	m ³ /h	7	9	10,2	11,3
30 mm	m ³ /h	9	11	12,7	14
40 mm	m ³ /h	11	13	15,1	16,7
50 mm	m ³ /h	13	15	17,6	19,3
60 mm	m ³ /h	14	16	20	22

To obtain the values in ton/h, multiply the data listed in the table by the specific weight of your material. These values are indicative only, estimated with materials of medium load capacity.

DEMOLITION PULVERIZERS



FOR EXCAVATORS,
BACKHOE LOADERS AND
SKID STEER LOADERS

FIND OUT
MORE

1,5 - 25 ton

POWERFUL

The cylinder system ensures constant power.

OPTIMAL DESIGN

for rapid opening and closing of the claws.

RESISTANT

The sturdy slewing ring and protected cylinders enhance the attachment's resistance to stress and overall durability.

INTERCHANGEABLE BLADES AND TEETH

Double functionality and savings.

REVERSIBLE AND INTERCHANGEABLE BLADES

For greater durability and versatility.

Installed on **excavators, backhoe loaders and skid steer loaders**, they are designed for **primary and secondary crushing**. They offer precision for fast and effective demolition work. The **360° continuous hydraulic rotation** facilitates the positioning of the attachment, enhancing **maneuverability and ease of use**.

APPLICATION AREAS



OPTIONAL ACCESSORIES

A

CRUSHER KIT*



B

PULVERIZER KIT*



C

SHEAR KIT*

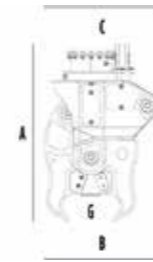


OPTIONAL ACCESSORIES

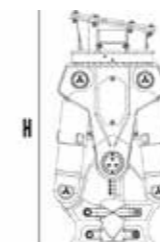
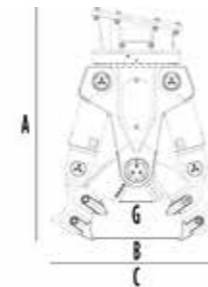
PAGE 23

* only available for MB-PT models.

DIMENSIONS



DIMENSIONS



MODELS



	UNITS	MB-P160	MB-P380
Recommended excavator	ton	1,5 - 3	3 - 6,5
Recommended backhoe loader*	ton	4 - 6	5 - 7
Recommended skid steer loader	ton	-	3 - 5
Weight	ton	0,17	0,38
Ø Maximum Rebar	mm	20	25
Speed/Min. (minimum - maximum)	rpm	15 - 20	20 - 25
Oil pressure (rotation)	bar	130 - 170	160 - 200
Oil flow rate (rotation)	l/min	5 - 10	20 - 25
Oil pressure (opening - closing)	bar	200 - 250	200 - 300
Oil flow rate (opening - closing)	l/min	20 - 30	40 - 70
Size A	mm	890	1180
Size B	mm	225	330
Size C	mm	580	810
Size D	mm	60	85
Size E	mm	360	500
Size G	mm	93	145

* Only compatible with the posterior boom of a Backhoe.

MODELS



	UNITS	MB-PT650	MB-PT1150	MB-PT1650
Recommended excavator	ton	6,5 - 13	12 - 19	19 - 25
Recommended backhoe loader*	ton	6 - 10		
Main frame weight	ton	0,49	0,85	1,24
Jaw weight A	ton	0,18	0,28	0,44
Jaw weight B	ton	0,2	0,3	0,48
Jaw weight C	ton	0,18	0,3	0,46
Ø Maximum Rebar	mm	35	40	40
Speed/Min. (minimum - maximum)	rpm	20 - 25	20 - 25	20 - 25
Oil pressure (rotation)	bar	160 - 200	180-220	200 - 250
Oil flow rate (rotation)	l/min	25 - 35	30-40	30 - 40
Oil pressure (opening - closing)	bar	250 - 350	250-350	300 - 350
Oil flow rate (opening - closing)	l/min	70 - 100	70-100	100 - 150
Size A	mm	1425	1650	1865
Size B	mm	560	635	705
Size C	mm	1050	1220	1390
Size D	mm	220	270	315
Size E	mm	710	850	850
Size G	mm	247	258	288
Size H	mm	1540	1785	2010

* Only compatible with the posterior boom of a Backhoe.

SCREENING BUCKETS



FOR EXCAVATORS,
BACKHOES LOADERS
AND LOADERS

FIND OUT
MORE



OPTIMAL DESIGN

To pick up and process material with ease.



CHANGE SCREENING PANELS

quick and easy.

6 - 50 ton



LOADING STRAIN CONTROL SYSTEM

A device that reduces stress on the machine while loading material.



EASY MAINTENANCE

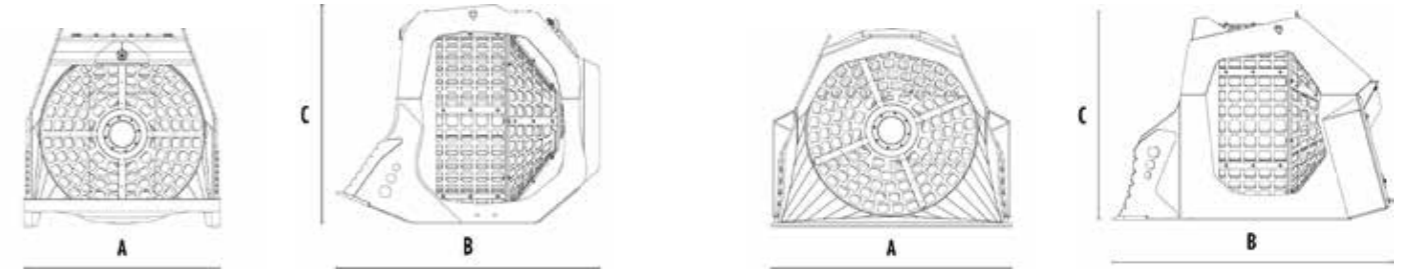
Simple, fast, and centralized maintenance.



HIGH PRODUCTION

Thanks to the cone-shaped basket and size.

DIMENSIONS



MODELS

	UNITS	MB-LS170 S2	MB-LS220 S2	MB-S10 S4	MB-S14 S4	MB-S18 S4	MB-S23
Recommended excavator	ton	-	-	6 - 9	9 - 20	20 - 35	35 - 50
Recommended backhoe loader	ton	8 - 15	-	8 - 9*	-	-	-
Recommended loader**	ton	8 - 15	15 - 25	-	-	-	-
Weight	ton	1,45	2,80	0,41	1,10	2,00	3,66
Load capacity	m ³	1,10	2,40	0,32	1,10	2,40	3,75
Pressure	bar	160 - 200	200 - 250	130 - 150	150 - 200	200 - 250	320 - 350
Back pressure	bar	< 20	< 20	< 20	< 20	< 20	< 5
Oil flow rate***	l/min	80 - 100	120 - 140	40 - 60	60 - 80	120 - 140	160 - 180
Basket diameter	mm	1200	1600	800	1200	1600	1970
Basket depth	mm	900	1225	555	900	1225	1490
Size A	mm	1670	2180	950	1400	1840	2320
Size B	mm	1930	2355	1220	1700	2260	2840
Size C	mm	1360	1790	1010	1440	1870	2350

* Only compatible with the posterior boom of a Backhoe.

** See legal regulations on loading and tipping UNI ISO 14397 - 1:2008.

***The minimum hydraulic flow rate value must be alongside the required operating pressure.

Installed on the carrier machine, MB screening buckets are the ideal tool to select and screen inert material, both before and after the crushing phase. Crucial in all situations where different size materials are necessary.



APPLICATION AREAS



OPTIONAL ACCESSORIES

24 MONTH WARRANTY



HOUR METER



BASKET PROTECTION KIT



DUST SUPPRESSION KIT



SHAFTS SCREENERS



FOR EXCAVATORS,
BACKHOES, LOADERS
AND SKID STEER

FIND OUT
MORE

1,3 - 80 ton

LOW NOISE EMISSIONS

The frame is designed to minimize noise and vibration.



EASY MAINTENANCE

Simple, fast, and centralized maintenance.



AUTOMATIC HYDRAULIC BUFFER SYSTEM

for the protection of the engine and transmission.



HIGH PRODUCTION

The optimal design and large loading volume ensures high and optimal production rates.



SHAFTS REPLACEMENT SYSTEM

The process to replace the shafts can be executed directly on site simply and safely.

Installed on the carrier machine, they select materials directly on site. Ideal for large and small construction sites. Thanks to the rotating shaft kits that can be replaced right on the job site, you can process different material whenever you need to.

APPLICATION AREAS



MINES



QUARRY



ROAD WORKS



INERT MATERIAL RECYCLING



PIPELINES



MAINTAINING LANDSCAPE AND AGRICULTURAL AREAS



ENCLOSED SPACES



URBAN CONSTRUCTION SITES



TUNNELS



EXCAVATIONS



OPTIONAL ACCESSORIES

24 MONTH WARRANTY



LOAD CAPACITY INCREASE KIT*



* only available for MB-HDS207 model.

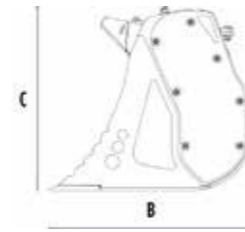
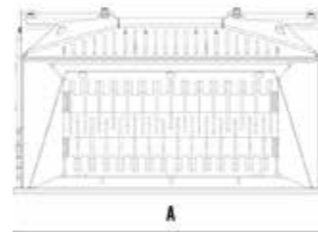
SHAFT HOLDER



SHAFT KIT

PAGE
22

DIMENSIONS



MODELS

	UNITS	MB-HDS207	MB-HDS307	MB-HDS407	MB-HDS212	MB-HDS312	MB-HDS214	MB-HDS220
Recommended excavator	ton	1,3 - 2,8	2,5 - 5	3,5 - 5,5	5 - 10	7 - 11	9 - 13	-
Recommended backhoe loader	ton	3 - 4*	4 - 6*	6 - 9*	8 - 9*	-	8 - 13	7 - 11
Recommended skid steer loader**	ton	-	-	-	3 - 4	-	4 - 10	4,5 - 10
Weight	ton	0,10	0,17	0,28	0,48	0,72	0,82	1,00
Load capacity	m ³	0,05	0,08	0,14	0,15	0,35	0,40	0,60
Pressure	bar	200 - 220	200 - 220	200 - 220	200 - 250	200 - 250	200 - 250	230 - 280
Oil flow rate***	l/min	25 - 35	25 - 35	25 - 35	75 - 100	75 - 100	75 - 120	90 - 150
Size A	mm	740	760	765	1220	1235	1380	2220
Size B	mm	545	700	840	815	985	1125	1060
Size C	mm	495	595	760	710	880	950	890

* Only compatible with the posterior boom of a Backhoe.

** See legal regulations on loading and tipping UNI ISO 14397 - 1:2008.

***The minimum hydraulic flow rate value must be alongside the required operating pressure.

MODELS

	UNITS	MB-HDS412	MB-HDS314	MB-HDS320	MB-HDS323	MB-HDS523	MB-HDS533
Recommended excavator	ton	10 - 14	13 - 20	18 - 24	22 - 35	30 - 45	50 - 80
Recommended loader**	ton	-	9 - 14	11 - 14	12 - 16	-	30 - 50
Weight	ton	1,20	1,40	2,10	2,40	3,35	6,60
Load capacity	m ³	0,55	0,90	1,35	165,00	200,00	3,80
Pressure	bar	230 - 280	230 - 280	250 - 300	250 - 300	250 - 300	250 - 300
Back pressure	bar	< 20	< 20	< 20	< 20	< 20	< 20
Oil flow rate***	l/min	90 - 150	100 - 160	120 - 160	120 - 160	230 - 250	230 - 250
Size A	mm	1250	1430	2050	2330	2330	3400
Size B	mm	1220	1350	1350	1500	1500	2130
Size C	mm	1110	1250	1250	1250	1620	1770

** See legal regulations on loading and tipping UNI ISO 14397 - 1:2008.

***The minimum hydraulic flow rate value must be alongside the required operating pressure.

DRUM CUTTERS



FOR EXCAVATORS AND SKID STEER

FIND OUT MORE

3,5 - 35 ton

REDUCED VIBRATION

Control devices reduce vibration on the arm of the carrier machine.

RELIABLE

Devices available to reduce the excavator's oil temperature during heavy use.

STRONGER

Equipped with Power Boost to evenly distribute the power to the rotary cutter that needs more force.

DURABLE

Equipped with wear resistant plates to protect the central body.

REPLACING THE DRUMS

The drum heads can be replaced directly on the job site.

IMMERSION

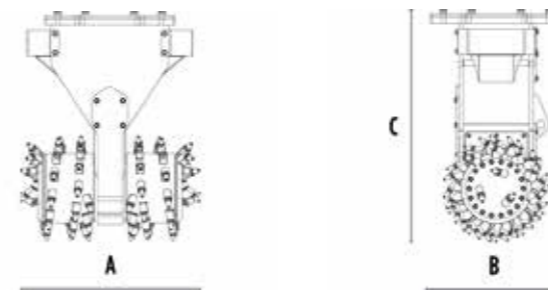
Suitable for underwater work.

Ideal for any application that requires milling compact materials efficiently and precisely. They are the only ones on the market to feature the Direct Drive Twin Motor System, a direct transmission double motor system that allows you to distribute the strength of the two drums depending on the power required.

APPLICATION AREAS



DIMENSIONS



MODELS

	UNITS	MB-R500	MB-R700	MB-R800	MB-R900
Recommended excavator	ton	3,5 - 11	6 - 13	10 - 22	19 - 35
Recommended skid steer loader*	ton	3,5 - 6	6 - 10	-	-
Weight	ton	0,30	0,60	1,00	1,40
Cutting width	mm	450	890	1015	1130
Pick force	N	19600	19600	33900	40000
Speed/Min. (minimum - maximum)	rpm	80 - 120	80 - 110	60 - 80	60 - 80
Output torque	Nm	5000	5000	10000	13200
Pressure	bar	300 - 350	300 - 350	300 - 350	300 - 350
Back pressure	bar	< 4	< 4	< 4	< 4
Oil flow rate**	l/min	60 - 120	110 - 180	200 - 300	250 - 350
Drum diameter	mm	500	500	600	680
Size A	mm	500	895	1015	1130
Size B	mm	500	500	600	680
Size C	mm	820	930	1120	1375

* See legal regulations on loading and tipping UNI ISO 14397 - 1:2008.
**The minimum hydraulic flow rate value must be alongside the required operating pressure.

OPTIONAL ACCESSORIES



** only available for MB-R500 model.

SORTING GRAPPLES



FOR EXCAVATORS

1,3 - 30 ton

FIND OUT MORE

COUPLING SYSTEM

Inclined coupling system increases the attachment's reach.



SAFE
Equipped with a safety valve that prevents the claws opening in case of pressure loss.



LOW NOISE EMISSIONS
thanks to the silent blocks.

REPLACEABLE BLADES

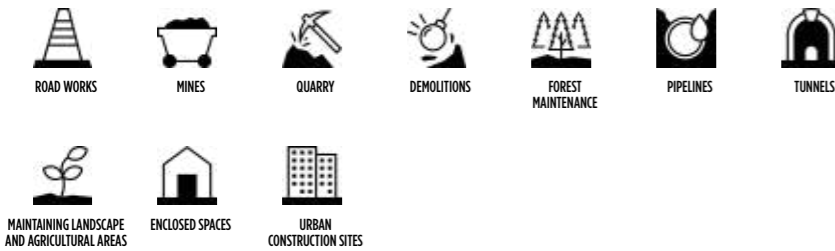
Double-sided cutting blades, reversible and replaceable on site.



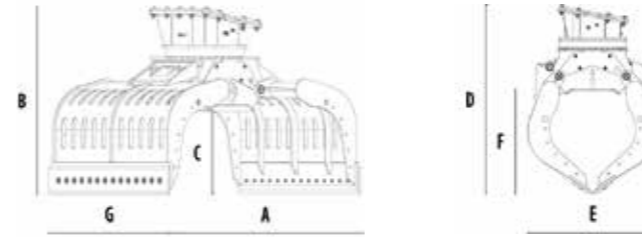
ACCESSORIES
Equipped with accessories that allow grapples to be used on various application areas.

Designed to select and handle any type of solid material. Thanks to the interchangeable claws and the 360° rotation, the grapples can handle large loads and odd shapes.

APPLICATION AREAS



DIMENSIONS



MODELS

	UNITS	MB-G350 S4	MB-G400 S4	MB-G450 S4	MB-G500 S4	MB-G600 S4	MB-G900 S4	MB-G1000 S4	MB-G1200 S4	MB-G1500 S4
Recommended excavator	ton	1,3 - 2,6	2,4 - 4	3,5 - 5,5	5 - 8	7 - 12	12 - 18	18 - 25	18 - 30	20 - 30
Weight	ton	0,09	0,20	0,31	0,42	0,63	0,78	1,62	1,65	2,05
Rotation	Degree	360°	360°	360°	360°	360°	360°	360°	360°	360°
Capacity (claws closed)	m ³	0,03	0,07	0,10	0,18	0,24	0,43	0,44	0,71	1,43
Oil pressure (rotation)	bar	130 - 170	130 - 170	150 - 200	160 - 200	160 - 200	160 - 220	200 - 250	200 - 250	200 - 250
Oil flow rate (rotation)	l/min	5 - 10	8 - 12	20 - 30	15 - 25	25 - 35	25 - 35	60 - 80	30 - 40	30 - 40
Oil pressure (opening - closing)	bar	180 - 220	180 - 220	180 - 220	180 - 250	250 - 300	300 - 350	300 - 350	300 - 350	300 - 350
Oil flow rate (opening - closing)	l/min	15 - 20	20 - 25	20 - 30	30 - 40	50 - 60	60 - 70	70 - 90	70 - 90	70 - 90
Size A	mm	795	1050	1300	1500	1705	1826	1781	2115	2480
Size B	mm	570	780	940	980	1145	1210	1375	1450	1650
Size C	mm	233	330	425	415	470	540	510	590	810
Size D	mm	615	825	1030	1095	1300	1410	1500	1670	1950
Size E	mm	490	675	770	855	975	1000	1200	1185	1365
Size F	mm	283	375	520	530	625	740	640	810	1110
Size G	mm	350	400	475	555	650	930	1015	1235	1535

OPTIONAL ACCESSORIES

OPTIONAL ACCESSORIES **PAGE 22**

SHAFT KIT





FOR SHAFTS SCREENERS Page 16-17



* Shafts in closed position.

SHAFTS EASILY
REPLACEABLE ON SITE



	SIFTING KIT RQ8/RQ15/RQ20/RQ50 APPLICATION: Sifting damp/dry soil, Soil Aeration ADJUSTMENT*: 8/15/20/50 mm
	FINE SIFTING KIT RE8/RE16 APPLICATION: Sifting damp/dry soil ADJUSTMENT*: 8,5/16 mm
	MIXER KIT APPLICATION: Soil Aeration, Compost Aeration, Coal reduction ADJUSTMENT*: Glass reduction, Drywall reduction
	COMPOST KIT APPLICATION: Shredding foliage and small branches, Composting ADJUSTMENT*: 36,5 mm

OPTIONAL ACCESSORIES

FOR SORTING GRAPPLES Page 20 - 21



	CLAM SHELL KIT For picking up and moving small material.
	RUBBER PROTECTION KIT For handling blocks of linear and delicate material.
	ROTATION POWER EXTENDER KIT To duplicate the grapple's rotational force and allow you to handle heavy materials with ease.
	SERRATED SIDE PLATE KIT For handling material of particular shapes while ensuring greater grip and safety.
	12 V ELECTRICAL KIT (FOR 2 HOSE FUNCTIONALITY) Utilize the 360° rotation even with excavators that only have two hoses.
	GRIP IMPROVEMENT KIT To easily handle materials of particular weights and shapes, better grip and more control.



24 MONTH WARRANTY



REMOTE POWER CONTROL SYSTEM

To manage the claws' closing force directly from the cabin.



MULTI-PURPOSE BLADE KIT

For picking up and handling materials of various shapes, thanks to an easily reversible double blade that is toothed on one side and smooth on the other.

OPTIONAL ACCESSORIES

FOR DEMOLITION PULVERIZERS Page 12-13



24 MONTH WARRANTY



12 V ELECTRICAL KIT (FOR 2 HOSE FUNCTIONALITY)

Utilize the 360° rotation even with excavators that only have two hoses.



PULVERIZER KIT

* only available for the MB-P380 model.



CRUSHER KIT

* only available for MB-PT models.



PULVERIZER KIT

* only available for MB-PT models.



SHEAR KIT

* only available for MB-PT models.

MB CRUSHER WORLDWIDE



MB S.p.A. (Headquarter)

Via Astico, 30/A - 36030 Fara Vicentino (VI) Italia
+39 0445 308148
+39 0445 308179
info@mbrcrusher.com

MB S.p.A. (Headquarter)

Via Astico, 30 - 36030 Fara Vicentino (VI) Italia
+39 0445 308148
+39 0445 850335
info@mbrcrusher.com

MB S.p.A. (Headquarter)

Via Astico, 34 - 36030 Fara Vicentino (VI) Italia
+39 0445 308148
+39 0445 850335
shipping@mbrcrusher.com



MB FRANCE SARL

320 Rue Saint Honoré - 75001 Paris (Siège social)
71 Rue Jean Zay - 69800 Saint Priest (Bureaux commerciaux)
0800907761
+33 04 26074292
info@mbrfrance.fr



MB CRUSHER INDIA PVT. LTD.

Office No. 323, 3rd Floor, Lodha Supremus Tower 2,
Wagle Estate, Road No. 22, Thane - West,
Thane - 400604, Maharashtra
+91 22 4970 6759
info@mbrcrusher.in



MB DEUTSCHLAND GMBH

Linprunstraße 49, D-80335 München (Hauptsitz)
Im Greut 10, 72406 Bisingen (Zentrallager)
08007237174
+49 (0) 74789290529
info@mbrcrusher.de



MB SHANGHAI 磨宝商贸(上海)有限公司

中国(上海)自由贸易试验区德堡路38号2幢三层311-21室
+86 21 543 76037
info@mbrcrusher.cn



PT MB INDONESIA

Cyber 2 Tower, 11th Floor | Jl. H. R. Rasuna Said No.13,
RT.7/RW.2, Kuningan - Jakarta Selatan, 12950 Indonesia
+62 8119879555
info@mbrcrusher.id



MB CRUSHER DO BRASIL
Comercio de equipamentos Ltda

Av. Das Nações Unidas, 14401 Torre C2 Tarumã CJ 2716
04794-000 São Paulo SP
+55 11 9981 31065
info@mbrcrusher.com.br



MB AMERICA, INC.

8730 Technology Way, Reno, NV, 89521 (Headquarters)
1203 E. Mountain St., Kernersville, NC, 27284 (Branch Office)
855 MB CRUSHER (855 622 7874)
775 853 1058 (Headquarters)
336 663 6373 (Branch Office)
775 455 4196
info@mbramerica.com



MB JAPAN 株式会社

〒352-0023 埼玉県新座市堀ノ内1-5-35 (新座本社)
〒650-0024 兵庫県神戸市中央区海岸通5
商船三井ビル617 (神戸オフィス)
048-423-2298 (新座本社)
078-381-5960 (神戸オフィス)
048-611-7865
info@mbrcrusher.jp



COMPANY WITH
QUALITY SYSTEM
CERTIFIED BY DNV
ISO 9001

HARDOX

WELD
ORGANISMO DI CERTIFICAZIONE
SALDATORI QUALIFICATI
ISO 9606-1



MBCRUSHER.COM

