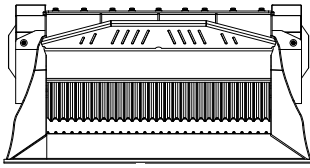
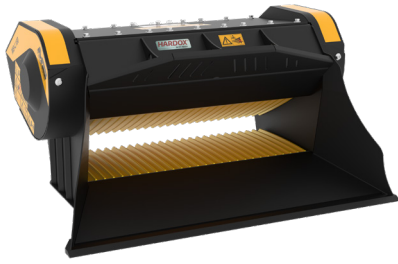
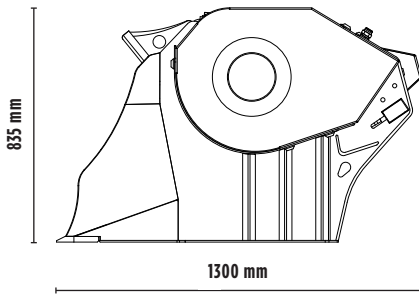


CRUSHER BUCKET

MB-L160 S2



1630 mm






835 mm

1300 mm



SPECIFICATIONS

	Recommended excavator	ton	11 - 16
	Recommended backhoe loader/loader*	ton	7 - 11
	Recommended skid steer loader*	ton	5 - 7
	Weight	ton	1,45
	Load capacity	m ³	0,35
	Pressure	bar	200 - 280
	Back pressure	bar	< 10
	Oil flow rate**	l/min	110 - 200
	Mouth width	mm	1180
	Mouth height	mm	280

* Please verify machine's Rated Operating Capacity.

** The minimum hydraulic flow rate value must be alongside the required operating pressure.

ACCESSORIES

Dust suppression kit	Hour meter
24 month warranty	

APPLICATION AREAS



DEMOLITIONS



ROAD WORKS



RECYCLING AGGREGATES



URBAN CONSTRUCTION SITES