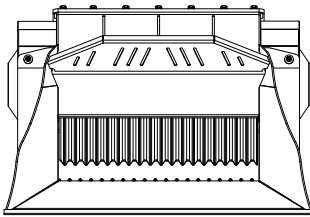
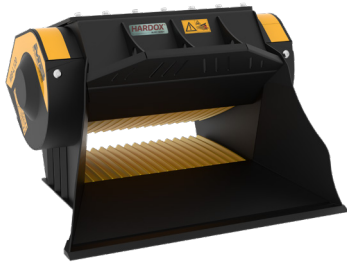
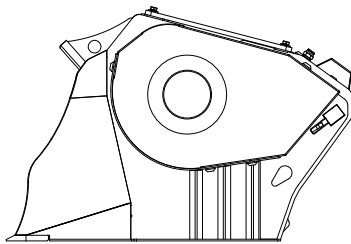


**CRUSHER BUCKET**

# MB-L120 S2



1230 mm






800 mm

1230 mm



## SPECIFICATIONS

	Recommended excavator	ton	7,5 - 12
	Recommended backhoe loader/loader*	ton	5 - 9
	Recommended skid steer loader*	ton	4,5 - 6
	Weight	ton	0,95
	Load capacity	m <sup>3</sup>	0,19
	Pressure	bar	200 - 250
	Back pressure	bar	< 10
	Oil flow rate**	l/min	95 - 120
	Mouth width	mm	790
	Mouth height	mm	250

\* Please verify machine's Rated Operating Capacity.

\*\* The minimum hydraulic flow rate value must be alongside the required operating pressure.

## ACCESSORIES

Dust suppression kit	Hour meter
24 month warranty	

## APPLICATION AREAS



DENOLITIONS



ROAD WORKS



RECYCLING AGGREGATES



URBAN CONSTRUCTION SITES