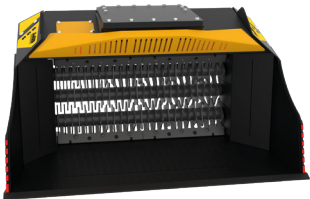
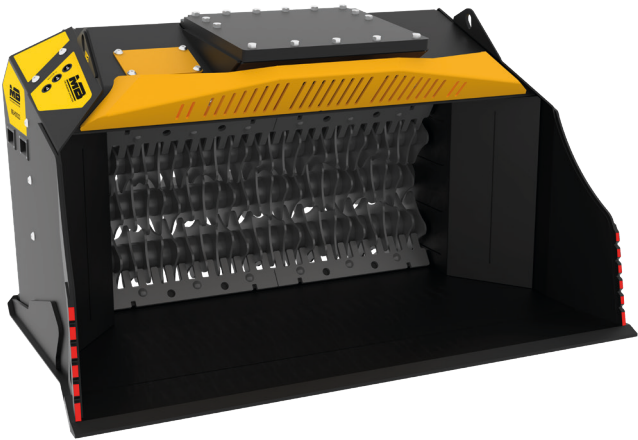


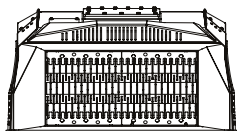
MB-HDS323



1250 mm



1500 mm



2330 mm

ACCESSORIES





- RQ8/RQ20/RQ50 SIFTING KIT
- RM MIXER KIT
- RE8/RE16 FINE SIFTING KIT
- RC COMPOST KIT
- SHAFT HOLDER
- 24 MONTH WARRANTY

SPECIFICATIONS

RECOMMENDED EXCAVATOR	$\geq 22 \leq 35$ ton
RECOMMENDED BACKHOE LOADER/LOADER*	$\geq 12 \leq 16$ ton
<small>*Please verify machine's Rated Operating Capacity.</small>	
WEIGHT	2,40 ton
LOAD CAPACITY	1,65 m ³
PRESSURE	> 250 bar
OIL FLOW RATE*	120 l/min.
<small>*The hydraulic flow and pressure values must meet the required parameters.</small>	

SHAFT KITS

* shaft in closed position

KIT	ADJUSTMENT*	APPLICATION
 RQ8/RQ20/RQ50 SIFTING KIT	8/20/50 mm	Sifting damp/dry soil Soil aeration
 RM MIXER KIT	-	Soil Aeration Compost aeration Charcoal reduction Glass reduction Drywall reduction
 RE8/RE16 FINE SIFTING KIT	8,5/16 mm	Sifting damp/dry soil
 RC COMPOST KIT	36,5 mm	Shredding foliage and small branches Composting

AREAS OF APPLICATION


RECYCLING
AGGREGATES


MAINTAINING
LANDSCAPE AND
AGRICULTURAL
AREAS


EXCAVATIONS


FOUNDRIES


PIPELINES


QUARRIES


MINES


TUNNELS


ENCLOSED
SPACES


URBAN
CONSTRUCTION
SITES


ROAD
WORKS