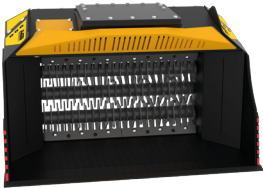
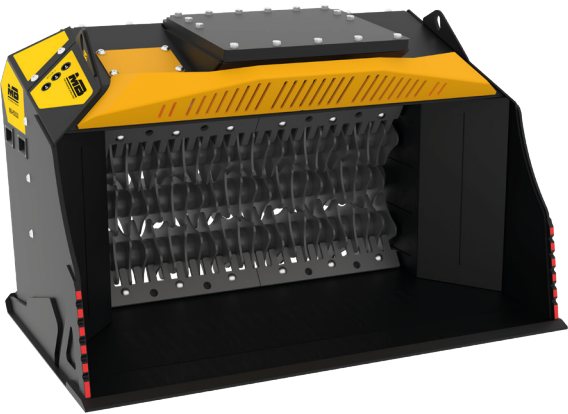


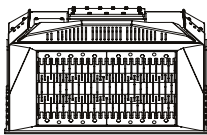
MB-HDS320



1250 mm



1350 mm



2050 mm

ACCESSORIES





- RQ8/RQ20/RQ50 SIFTING KIT
- RM MIXER KIT
- RE8/RE16 FINE SIFTING KIT
- RC COMPOST KIT
- SHAFT HOLDER
- 24 MONTH WARRANTY

SPECIFICATIONS

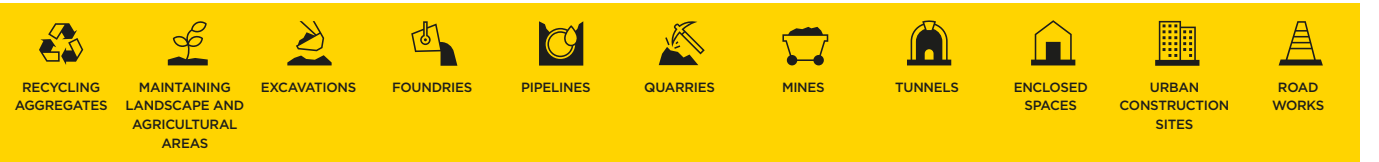
RECOMMENDED EXCAVATOR	$\geq 18 \leq 24$ ton
RECOMMENDED BACKHOE LOADER/LOADER*	$\geq 11 \leq 14$ ton*
*Please verify machine's Rated Operating Capacity.	
WEIGHT	2,10 ton
LOAD CAPACITY	1,35 m ³
PRESSURE	> 250 bar
OIL FLOW RATE*	120 l/min.
*The hydraulic flow and pressure values must meet the required parameters.	

SHAFT KITS

* shaft in closed position

KIT	ADJUSTMENT*	APPLICATION
 RQ8/RQ20/RQ50 SIFTING KIT	8/20/50 mm	Sifting damp/dry soil Soil aeration
 RM MIXER KIT	-	Soil Aeration Compost aeration Charcoal reduction Glass reduction Drywall reduction
 RE8/RE16 FINE SIFTING KIT	8,5/16 mm	Sifting damp/dry soil
 RC COMPOST KIT	36,5 mm	Shredding foliage and small branches Composting

AREAS OF APPLICATION



The data provided above is not binding, as the manufacturer reserves the right to make improvements to its products at any time and without notice.

Rev. 2023/01



MBCRUSHER.COM