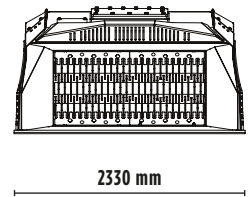
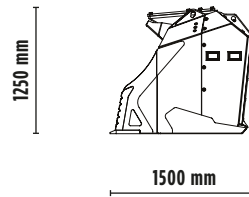
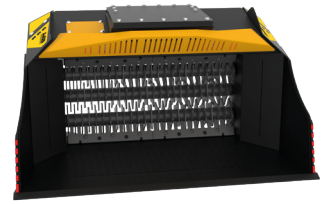
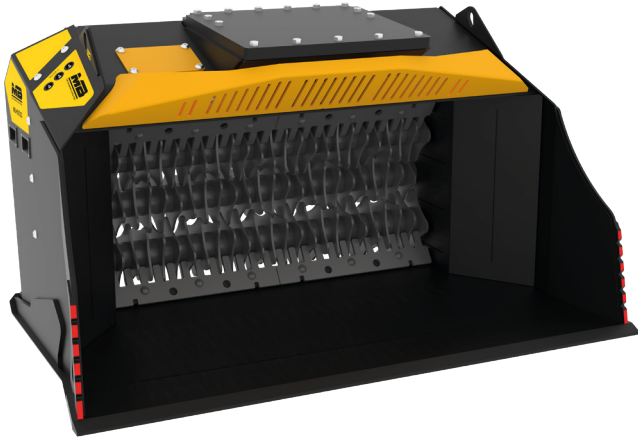


MB-HDS323

MB
THE CRUSHING EVOLUTION



ACCESSORIES





- RQ20/RQ50 SIFTING KIT
- RM MIXER KIT
- RE8/RE16 FINE SIFTING KIT
- RC COMPOST KIT
- SHAFT HOLDER

SPECIFICATIONS

RECOMMENDED EXCAVATOR	≥ 22 ≤ 35 ton
RECOMMENDED BACKHOE LOADER/ LOADER	≥ 12 ≤ 16 ton * <small>* Please verify machine's Rated Operating Capacity.</small>
WEIGHT	2,40 ton
LOAD CAPACITY	1,65 m ³
PRESSURE	> 250 bar
OIL FLOW RATE	120 l/min. <small>The hydraulic flow and pressure values must meet the required parameters.</small>

SHAFT KITS

* shaft in closed position

KIT	ADJUSTMENT	APPLICATION
 RQ20/RQ50 SIFTING KIT	20/50 mm	Sifting damp/dry soil Soil aeration
 RM MIXER KIT	-	Soil Aeration Compost aeration Charcoal reduction Glass reduction Drywall reduction
 RE8/RE16 FINE SIFTING KIT	8,5/16 mm	Sifting damp/dry soil
 RC COMPOST KIT	36,5* mm	Shredding foliage and small branches Composting

APPLICATION AREAS



The data provided above is not binding, as the manufacturer reserves the right to make improvements to its products at any time and without notice.

Rev. 2022/11



MBCRUSHER.COM