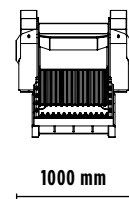
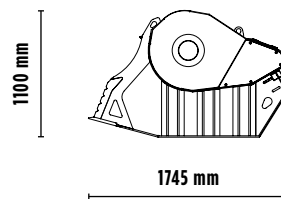
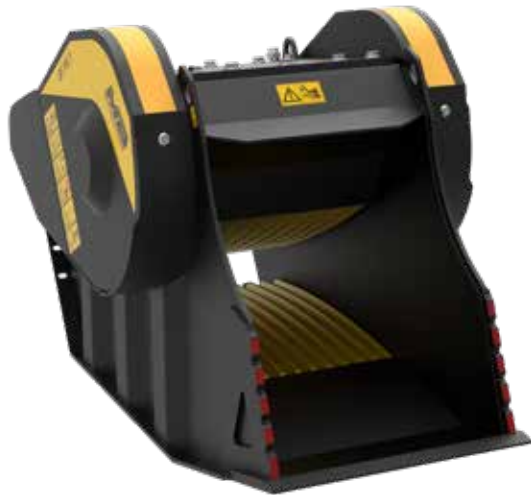


BF60.1 S4



ACCESSORIES

- RECOMMENDED SPARE PARTS KIT
- FIXED COUPLING
- IRON SEPARATOR
- HOUR METER
- DUST SUPPRESSION KIT
- 24 MONTHS WARRANTY

SPECIFICATIONS

RECOMMEND EQUIPMENT	≥ 10 ≤ 18 ton
WEIGHT	1,65 ton
LOAD CAPACITY	0,55 m ³
PRESSURE	> 220 bar
BACK PRESSURE	< 10 bar
OIL FLOW RATE	> 120 < 180 l/min. <small>The hydraulic flow and pressure values must meet the required parameters.</small>
MOUTH WIDTH	610 mm
MOUTH HEIGHT	500 mm
OUTPUT ADJUSTMENT	≥ 15 ≤ 130 mm

APPLICATION AREAS



RECYCLING



URBAN
JOB SITES



ROAD WORKS



HIGH-ALTITUDE
SITES



DEMOLITION



EXCAVATION

The data provided above is not binding, as the manufacturer reserves the right to make improvements to its products at any time and without notice.

Rev. 2022/10



MBCRUSHER.COM